



12 Kirkmore Avenue JAN JUC, VIC



3



1

Northerly Aspect On Large Block

Inspections by appointment only. No entry permitted without prior appointment. Regional residents only with photo i.d.

The existing home comprises open plan living, with defining features including a timber-lined feature wall and hardwood floors. Original cabinetry and appliances in the kitchen are reflective of its era. Three garden view bedrooms with built-in robes, and a central bathroom with updated vanity, occupy the rear of the home. Whilst in good condition, this home has stood the test of time and could be updated as required to maximise the inspired location.

Only minutes to the surf beach, parks, Jan Juc shops and the RACV clubhouse, discover for yourself what makes Jan Juc such a desirable place to live.

Price: Auction: Sat 4th Sep @ 11:00am
Property Type: House

HAYDEN

Ben Smith

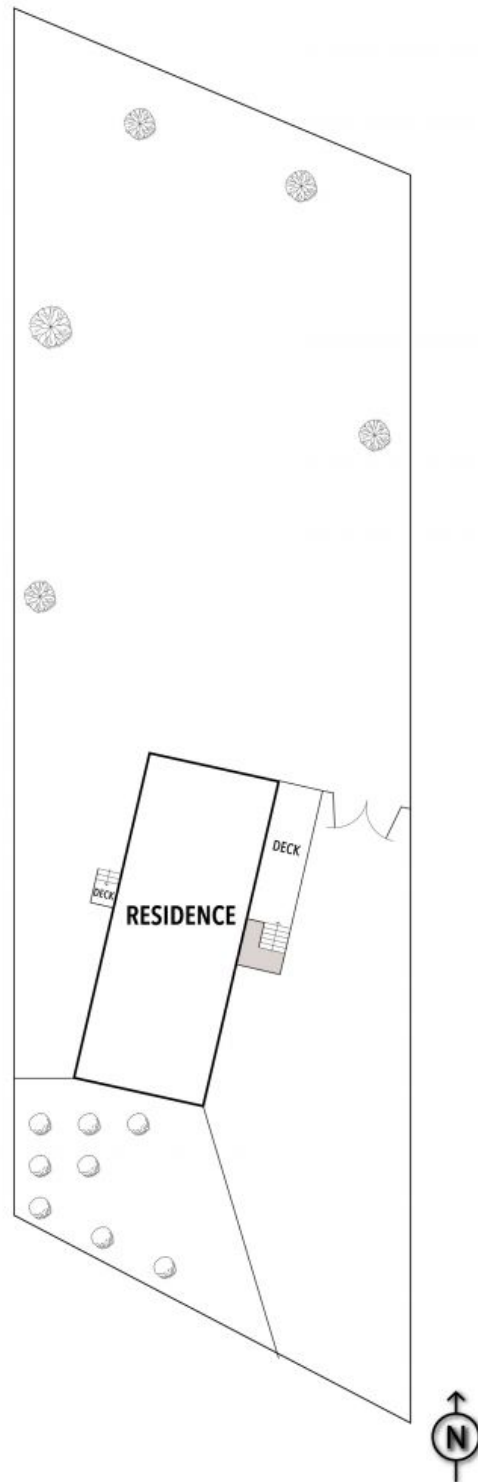
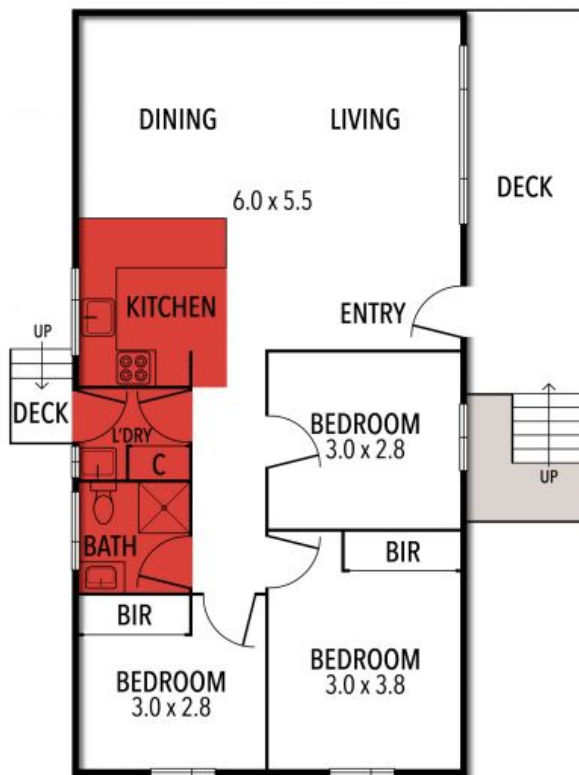
0423050825

bens@hayden.com.au

Bryan Hayden

0417613250

bryanh@hayden.com.au



THE ABOVE PLAN IS AN ARTIST'S IMPRESSION ONLY, IT INCLUDES ELEMENTS THAT ARE FOR DISPLAY PURPOSES ONLY AND MAY NOT BE TO SCALE. LANDSCAPING SHOWN IS INDICATIVE ONLY. DIMENSIONS ARE APPROXIMATE.