



6 Clivedon Court LEOPOLD, VIC



Treasured Family Home Overflowing With Potential! - Private Inspections Welcome

REGISTERED BUYERS ONLY MAY ATTEND THE AUCTION THIS SATURDAY (Due to Covid restrictions)

Occupying approx. 785m2 with far-reaching views, this original home is awaiting its next chapter!

Price: AUCTION

Property Type: House

Land: 785 m2

Don't miss this opportunity to make your mark in Leopold!

Terms: 10% deposit, balance 30 - 60 days

HAYDEN

Karen Purcell

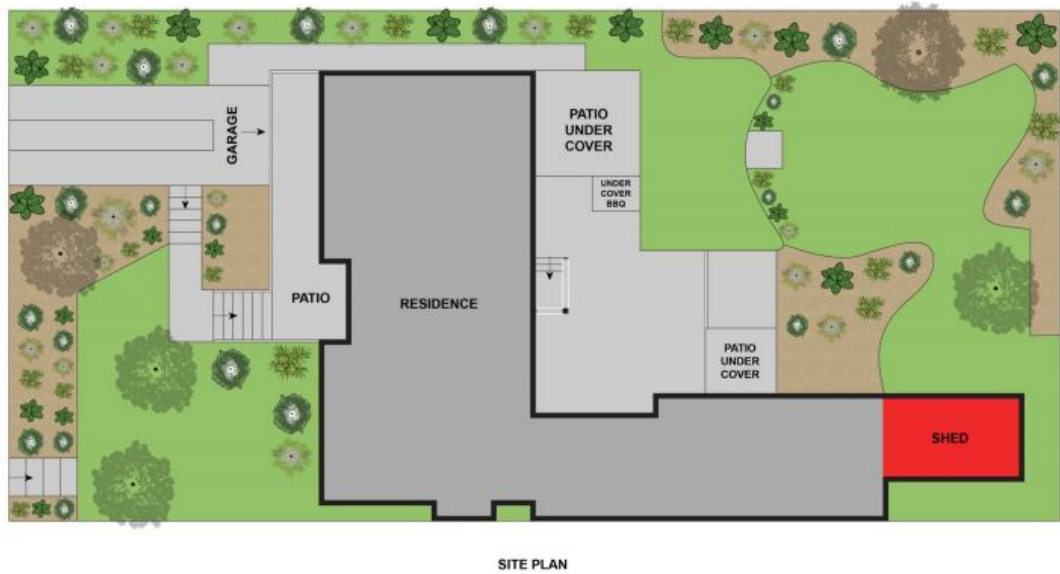
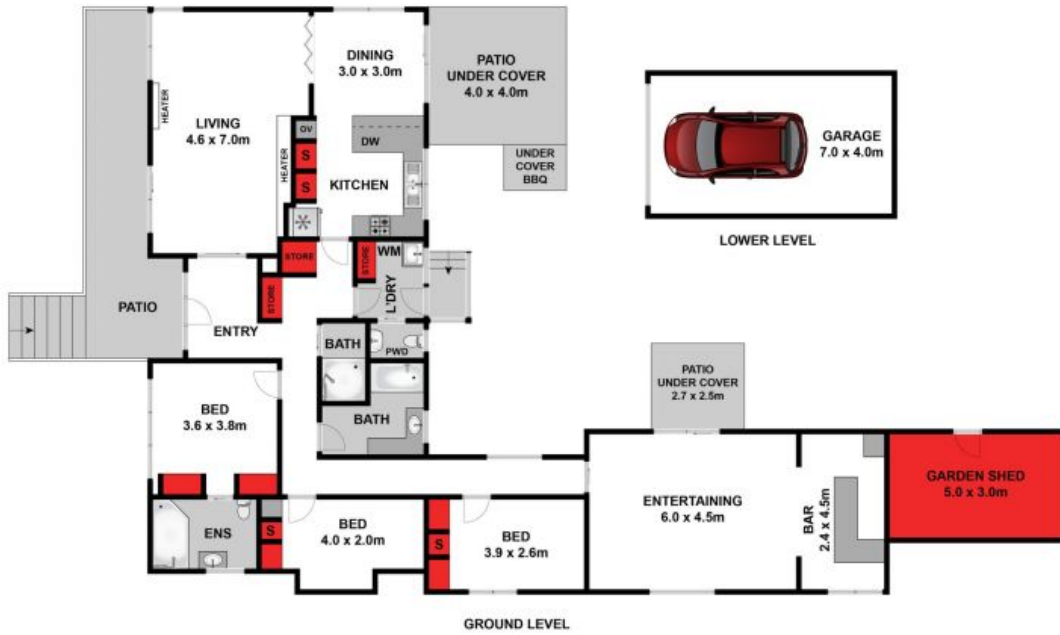
0448510143

karenp@haydenleopold.com.au

Robyn Grumley

0448510134

robyn@haydenleopold.com.au



Whilst bwrn.com.au has made every attempt to ensure the accuracy of the floor plan contained here, measurements are approximate and no responsibility is taken for any error, omission, or mis-statement. This plan is for illustrative purposes only.



6 Clivedon Court, Leopold

HAYDEN

6 Clivedon Court

LEOPOLD, VIC