



6 Clivedon Court LEOPOLD, VIC



## Treasured Family Home Overflowing With Potential! - Private Inspections Welcome

REGISTERED BUYERS ONLY MAY ATTEND THE AUCTION THIS SATURDAY (Due to Covid restrictions)

Occupying approx. 785m2 with far-reaching views, this original home is awaiting its next chapter!

**Price:** AUCTION

**Property Type:** House

**Land:** 785 m2

Don't miss this opportunity to make your mark in Leopold!

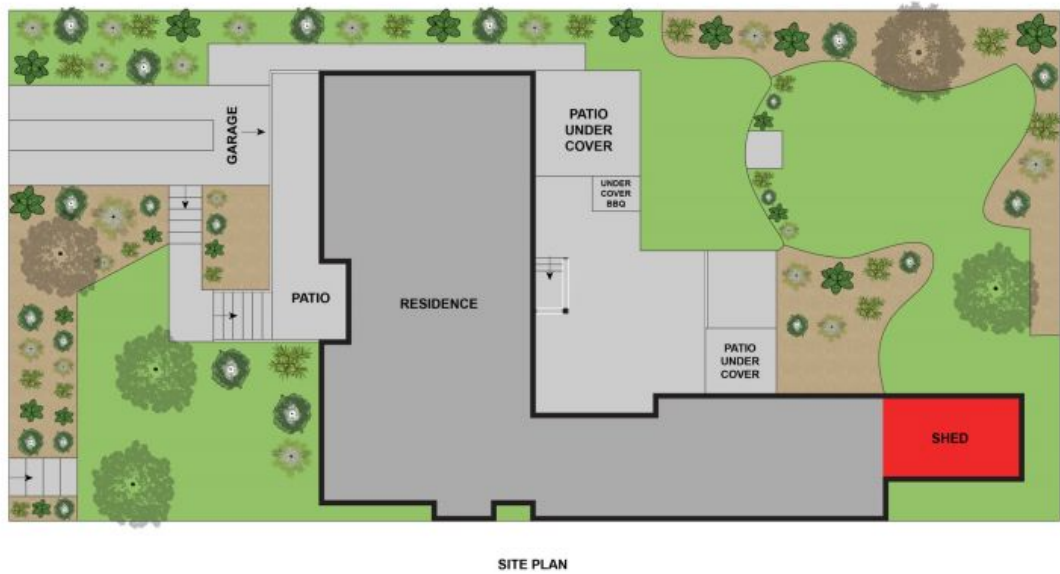
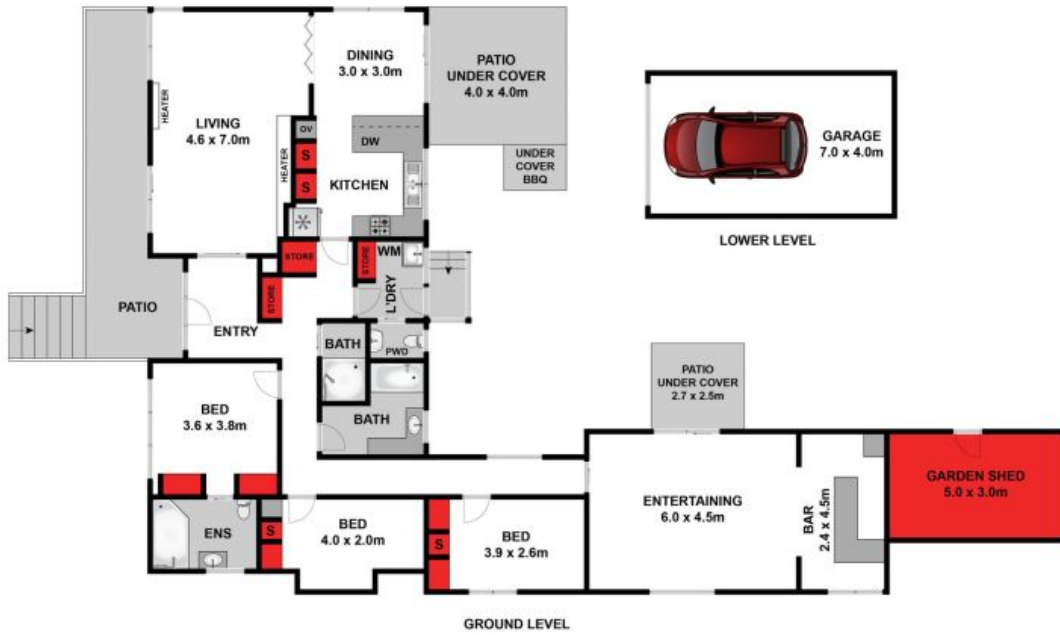
Terms: 10% deposit, balance 30 - 60 days

# HAYDEN

**Karen Purcell**

0448510143

karenp@haydenleopold.com.au



Whilst [bwrn.com.au](http://bwrn.com.au) has made every attempt to ensure the accuracy of the floor plan contained here, measurements are approximate and no responsibility is taken for any error, omission, or mis-statement. This plan is for illustrative purposes only.



## 6 Clivedon Court, Leopold

**HAYDEN**

6 Clivedon Court

LEOPOLD, VIC