



7 Waterloo Plains Crescent WINCHELSEA, VIC



4



2



2

Amazing Space to Call Your Own!

Inspections by appointment only. No entry permitted without prior appointment. Regional residents only with photo i.d.

This modern 4BR home with a practical floor plan and generous back yard presents fantastic value for families. Centrally located in the Winchelsea township opposite the Golf Course, it is close to transport, schools and shops, and only a short walk to the River. Set on a level 1000m2 (approx) allotment, this blank canvas backyard lends itself to multiple options; a family area for kids to play, vegie gardens, cubby houses. The choice is yours to design it to suit your needs.

Two living areas provide dedicated space for relaxation, entertainment or a separate place for the kids to play. The central kitchen features a panoramic west window and quality Ilve stainless-steel appliances, including a 900mm electric oven and Induction cooktop. A stone-topped island bench and adjacent dining area provide gathering places for the whole family to come together, overlooking the light-filled open plan living area and sliding door

Price: \$665,000 - \$725,000

Property Type: House

Land: 1000 m2

HAYDEN

Ben Smith

0423050825

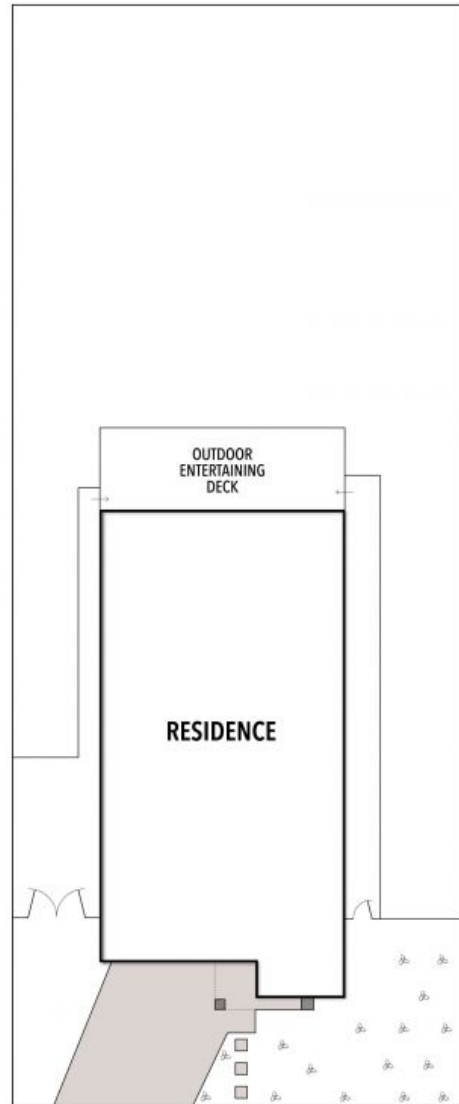
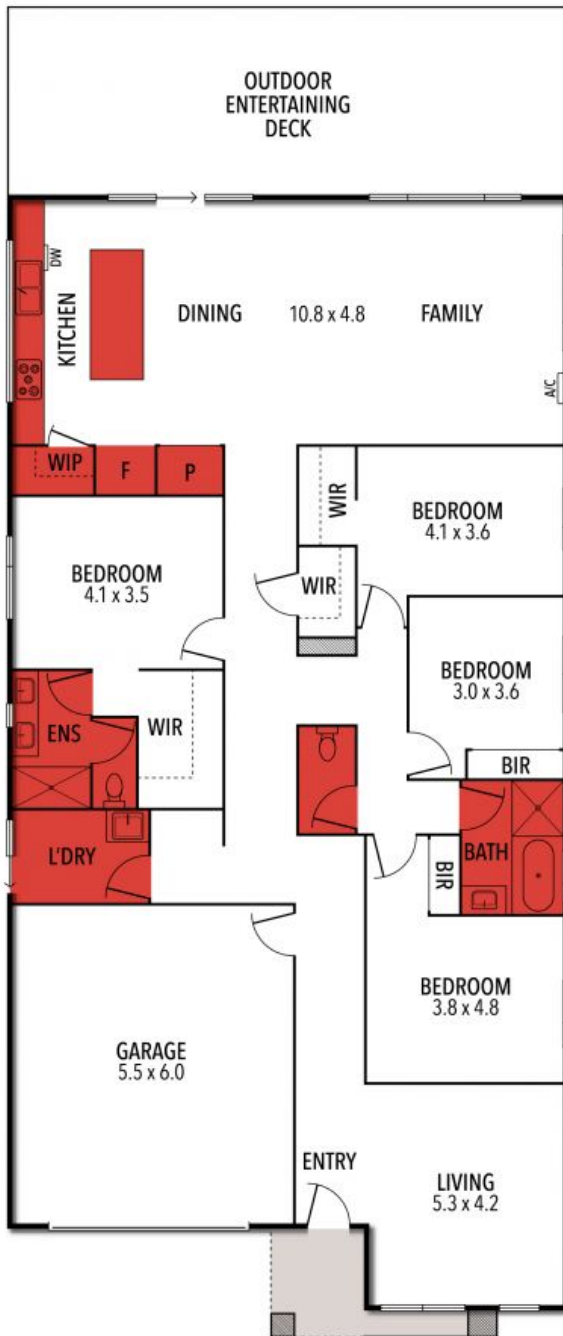
bens@hayden.com.au

Darcy Bennett

0468427359

darcyb@hayden.com.au

7 WATERLOO PLAINS CRESCENT, WINCHELSEA



THE ABOVE PLAN IS AN ARTIST'S IMPRESSION ONLY, IT INCLUDES ELEMENTS THAT ARE FOR DISPLAY PURPOSES ONLY AND MAY NOT BE TO SCALE. LANDSCAPING SHOWN IS INDICATIVE ONLY. DIMENSIONS ARE APPROXIMATE.