



26/12 Lahinch Mews TORQUAY, VIC



3



2



2

Fairway Views And Sunshine

This is contemporary, quality townhouse living with a community feel and beautiful fairway views. Offered over three levels, it is spacious, light filled and the perfect lock and leave.

The open plan living area on the second level is a highlight. It features a sunny space to relax with large sliding doors onto a sheltered balcony overlooking the golf course. Entertain or wind down and relax all year round. The generous kitchen features Smeg appliances, Caesarstone bench tops, ample storage and access to a second outdoor living area. A powder room is also on this level.

At ground floor level you will find a double lock up garage with remote door; Euro laundry; extensive storage and sliding doors onto a sunny courtyard BBQ area. Garage can also be easily converted to fourth bedroom or stand alone studio for short term rental or addition

Price: Contact Agent
Property Type: Townhouse
Land: 112 m2

HAYDEN

Ben Smith

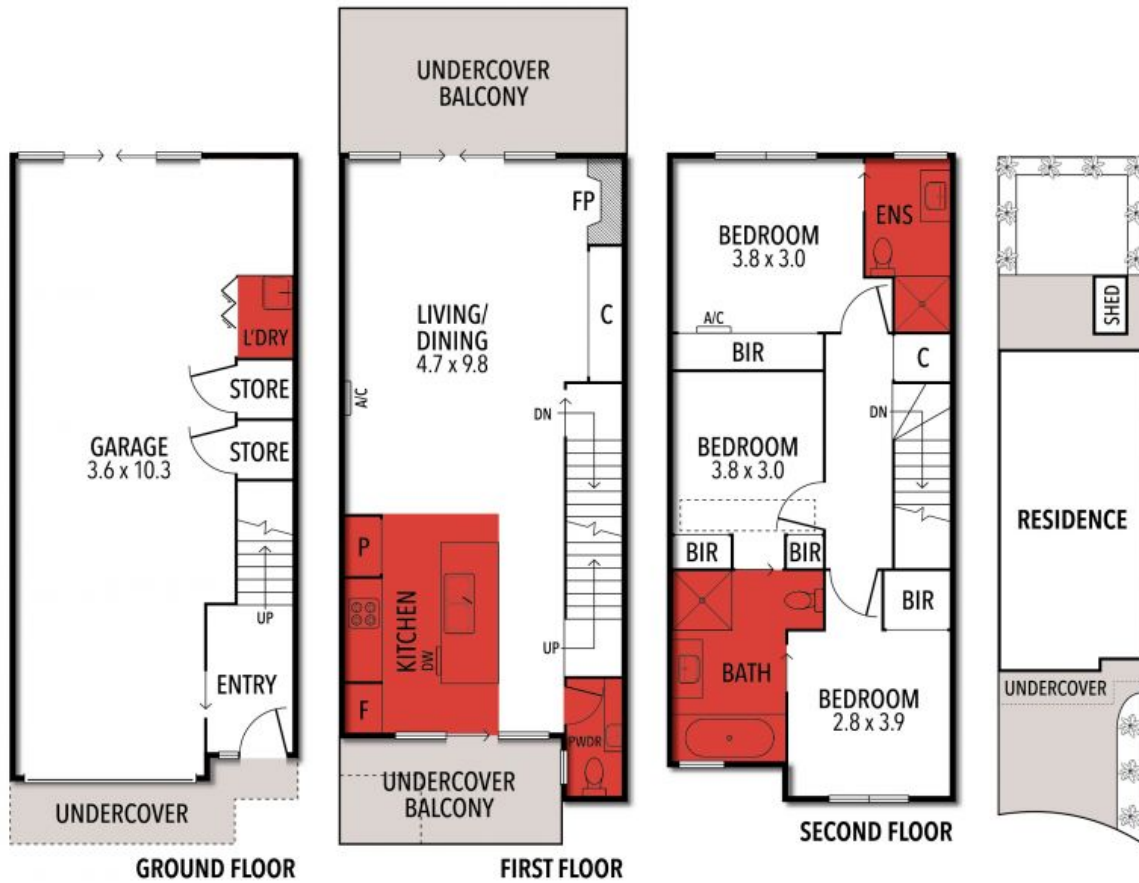
0423050825

bens@hayden.com.au

Michael Nemeth

0414762296

michaeln@hayden.com.au



THE ABOVE PLAN IS AN ARTIST'S IMPRESSION ONLY, IT INCLUDES ELEMENTS THAT ARE FOR DISPLAY PURPOSES ONLY AND MAY NOT BE TO SCALE. LANDSCAPING SHOWN IS INDICATIVE ONLY. DIMENSIONS ARE APPROXIMATE.