



DISCLAIMER: This drawing is indicative only & all measurements are approximate.



19 The Crescent LEOPOLD, VIC



4



2



4

A Stunning Family Entertainer With Bay Views! - Private Inspections Only

If style and quality are paramount in your next home, look no further than this sensational family residence! Showcasing breathtaking bay views, a brand-new kitchen, and an enchanting backyard, it will be love at first sight!

The kitchen is the epitome of contemporary elegance with stone benchtops, a herringbone tiled splashback, walk-in pantry and stainless steel appliances (900mm oven/gas cooktop and SMEG dishwasher). Pendant lights make a stylish statement above both the dining area and breakfast bar. The Master Bedroom creates a dreamy oasis for parents with a walk-in robe and en suite. The powder room completes the upper level. Three additional bedrooms with built-in robes occupy the lower level, along with the main bathroom and laundry. You'll be in the utmost comfort thanks to ducted heating, an air conditioner and ceiling fans. Other standout features include solar panels, a new security system, new external automated blinds

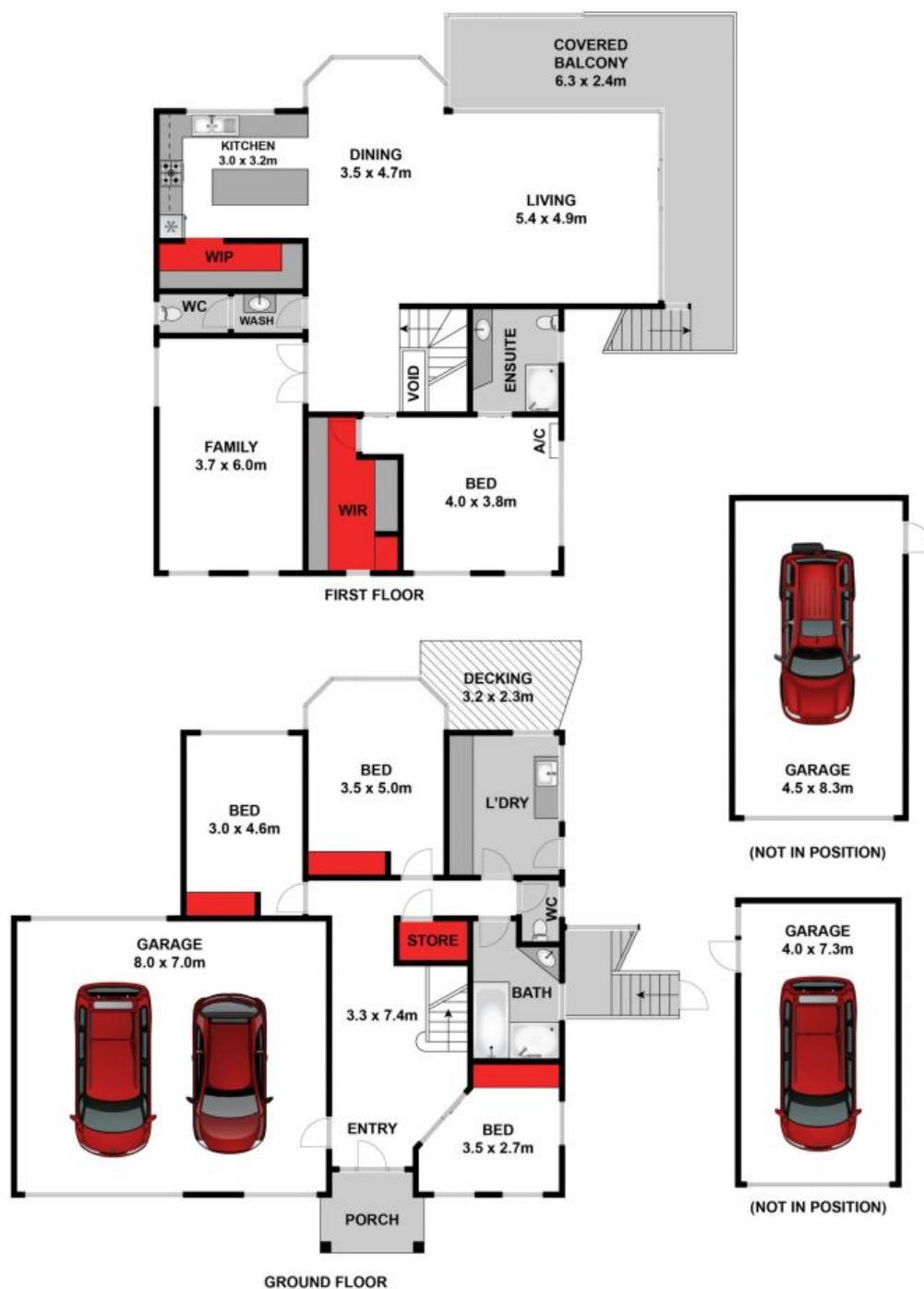
Price: \$1,150,000 - \$1,265,000
Property Type: House
Land: 1304 m2

HAYDEN

Karen Purcell

0448510143

karenp@haydenleopold.com.au



Whilst bwrn.com.au has made every attempt to ensure the accuracy of the floor plan contained here, measurements are approximate and no responsibility is taken for any error, omission, or mis-statement. This plan is for illustrative purposes only.



19 The Crescent, Leopold

HAYDEN

19 The Crescent

LEOPOLD, VIC