



56 Merrijig Drive TORQUAY, VIC



2



2



1

Park View Townhouse

This distinctive residence presents as new. A sense of cool and calm has been captured throughout, with interiors defined by the fresh white colour palette. The modern kitchen is equipped with quality Ilve stainless steel appliances (gas cooktop, electric oven, dishwasher), stylish timber-look cabinetry and a stone waterfall island bench. A casual dining area overlooks the private courtyard and lawn, with stacker sliding doors to the patio and Ilve natural gas BBQ.

This convenient location opposite the sports reserve is ideal for anyone looking for an easy-care home or investment property in a desirable coastal location.

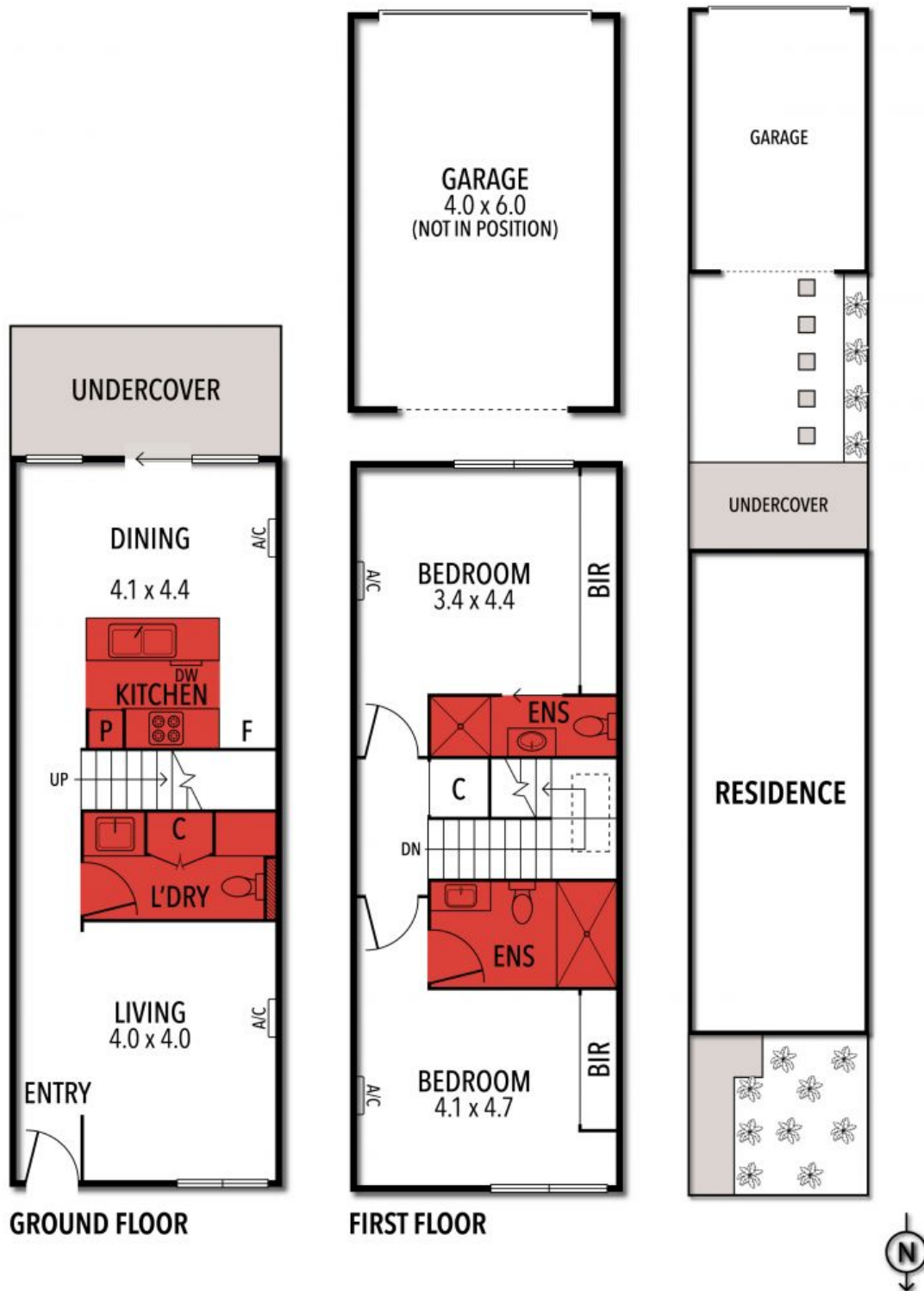
Price: \$790,00
Property Type: Townhouse

HAYDEN

Hayden Real Estate -

Torquay

samh@hayden.com.au



THE ABOVE PLAN IS AN ARTIST'S IMPRESSION ONLY, IT INCLUDES ELEMENTS THAT ARE FOR DISPLAY PURPOSES ONLY AND MAY NOT BE TO SCALE. LANDSCAPING SHOWN IS INDICATIVE ONLY. DIMENSIONS ARE APPROXIMATE.