



20 Cameron Road ANGLESEA, VIC



3



2



4

Idyllic Destination

This idyllic destination will be the place you call home, or spend holidays, for generations to come. Located directly opposite the coastal bushland reserve, the outlook is as spectacular as the Surf Coast walking tracks that connect you to the beach and river. It is also a very short walk to the Bowling Club and Anglesea Village, leaving very little use for the car.

The functional kitchen has electric cooking and an L-shaped breakfast bar, adjoining the dining space. The hallway leads to bathroom facilities, complemented by a second shower and toilet budding off the laundry/utility room. Two bedrooms have built-in robes, ceiling fans and Noiro panel heating.

Capturing all day sunshine, the enormous low maintenance backyard has privacy-enhancing trees to the boundaries, plus 2 garden sheds and a requisite outdoor shower. The fully fenced property also offers plenty of parking and incredible scope for renovation or extension (STCA). Move straight in and enjoy this extended family/holiday home with guest bungalow.

Price: Contact Agent
Property Type: House
Land: 885 m2

HAYDEN

Darcy Bennett

0468427359

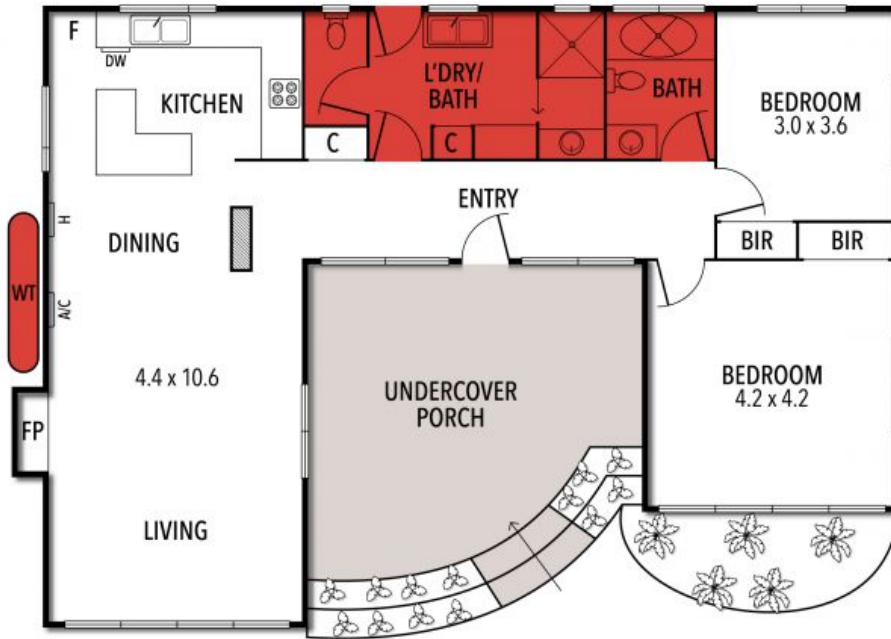
darcyb@hayden.com.au

Bryan Hayden

0417613250

bryanh@hayden.com.au

20 CAMERON ROAD, ANGLESEA



THE ABOVE PLAN IS AN ARTIST'S IMPRESSION ONLY, IT INCLUDES ELEMENTS THAT ARE FOR DISPLAY PURPOSES ONLY AND MAY NOT BE TO SCALE. LANDSCAPING SHOWN IS INDICATIVE ONLY. DIMENSIONS ARE APPROXIMATE.