



3 Mary Place LEOPOLD, VIC



4



3



2

A Family Entertainer With Sparking Bay Views!

Occupying approx. 784m², this spacious family home showcases sweeping views over the sparkling bay waters & You Yangs!

Price: \$880,000 - \$930,000

Property Type: House

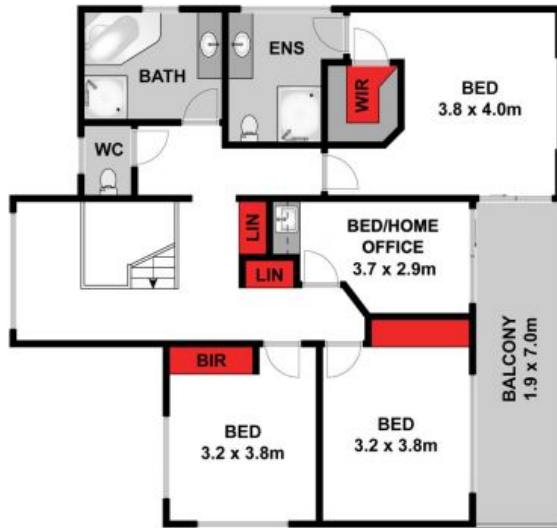
Land: 784 m²

HAYDEN

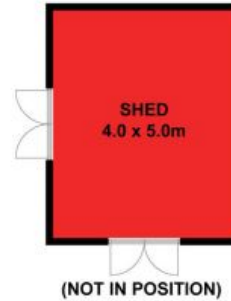
Karen Purcell

0448510143

karenp@haydenleopold.com.au



FIRST FLOOR



GROUND FLOOR

Approx House Area 284m²

Whilst bwrn.com.au has made every attempt to ensure the accuracy of the floor plan contained here, measurements are approximate and no responsibility is taken for any error, omission, or mis-statement. This plan is for illustrative purposes only.



3 Mary Place, Leopold

HAYDEN

3 Mary Place

LEOPOLD, VIC