



2 Barimba Court LEOPOLD, VIC



4



2



3

## Terrific Family Living Upon An Impressive 1049m2 (approx.) - UNDER CONTRACT

Occupying approx. 1049m2, this property will impress families and tradies alike!

Boasting external access, the Master Bedroom features built-in robes and en suite with open shower. Three additional bedrooms (two with built-in robes) share close access to the main bathroom, while the laundry and powder room complete the layout.

Located in a quiet court, you'll appreciate that life's conveniences are within easy reach. The Ash Road shops are a short walk away, along with public transport and Leopold Kindergarten. Leopold Primary School is within easy reach, while a short drive will find you at the popular Gateway Plaza. The Bellarine Highway grants easy access to both Geelong and th

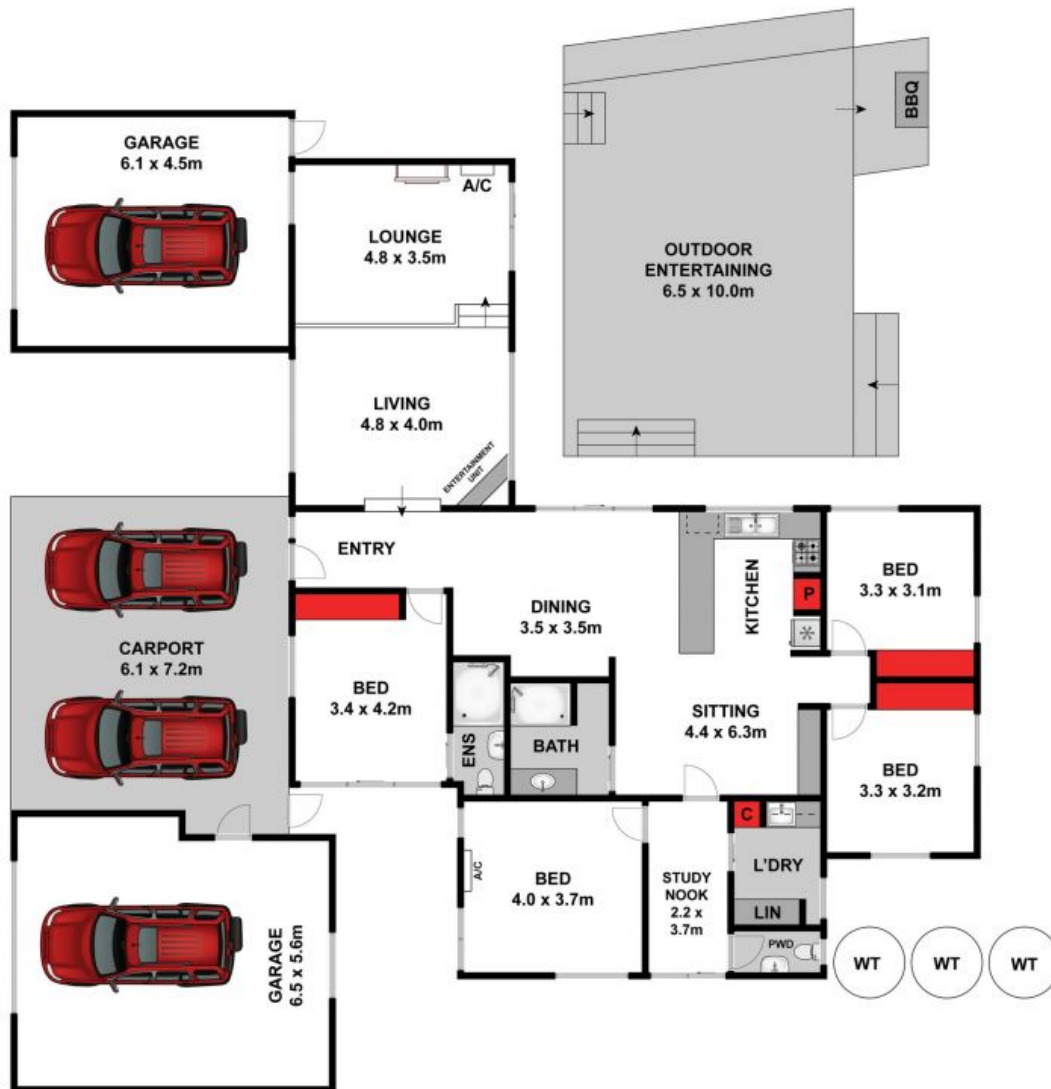
**Price:** \$670,000 - \$720,000  
**Property Type:** House  
**Land:** 1049 m2

# HAYDEN

**Karen Purcell**

0448510143

karenp@haydenleopold.com.au



Whilst [bwrn.com.au](http://bwrn.com.au) has made every attempt to ensure the accuracy of the floor plan contained here, measurements are approximate and no responsibility is taken for any error, omission, or mis-statement. This plan is for illustrative purposes only.



**2 Barimba Court, Leopold**

**HAYDEN**

**2 Barimba Court**

**LEOPOLD, VIC**