



5 Seashore Way LEOPOLD, VIC



4



2



2

A Blissful Family Lifestyle Awaits?

Treat your family to the lifestyle you've been dreaming of in Leopold!

The kitchen showcases stone benchtops, a walk-in pantry and stainless steel appliances (900mm oven/gas cooktop & F&P double-drawer dishwasher). Statement pendant lighting adds a stylish touch to both the breakfast bar and dining area. Able to be sectioned off for privacy, the central lounge entices you to kick back and unwind.

This family-friendly neighbourhood places you within walking distance to the local playground, sporting grounds and public transport. The Gateway Plaza takes care of all your shopping and dining needs, while Leopold Primary School is moments away. Both Lake Connewarre and the Gateway Sanctuary inspire you to venture outdoors. Easy access to Geelong and the B

Price: \$740,000 - \$780,000

Property Type: House

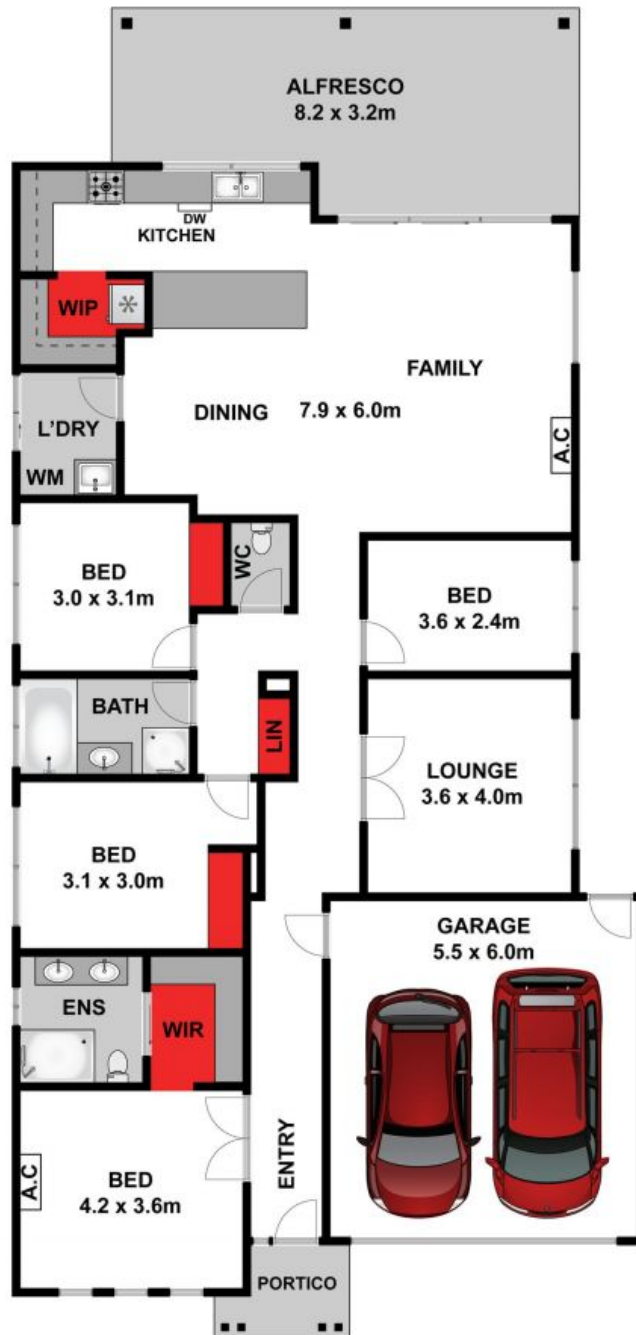
Land: 512 m2

HAYDEN

Karen Purcell

0448510143

karenp@haydenleopold.com.au



Whilst bwm.com.au has made every attempt to ensure the accuracy of the floor plan contained here, measurements are approximate and no responsibility is taken for any error, omission, or mis-statement. This plan is for illustrative purposes only.

5 Seashore Way, Leopold

HAYDEN

5 Seashore Way

LEOPOLD, VIC