



23 Arabando Drive LEOPOLD, VIC



2



1



2

## The Perfect Investment, Downsizer, or First Home!

Sitting proudly on its own title, this charming brick home presents the low-maintenance lifestyle you've been craving! Savvy investors will appreciate that tenants are in place until June 2022, while first homebuyers and downsizers will also be tempted to seize this incredible opportunity!

When it comes to convenient locations, this one has it all. The Gateway Plaza is within easy walking distance, meaning you don't have to venture far for all your shopping and dining needs. The Leopold Community Centre is also a short walk away, along with public transport and the Leopold Memorial Reserve sporting grounds. With Leopold Primary School just up the road, this is also an ideal choice for single parents or grandparents who help with the school pick-up. Just jump in the car, and you'll soon be in the heart of Geelong or expl

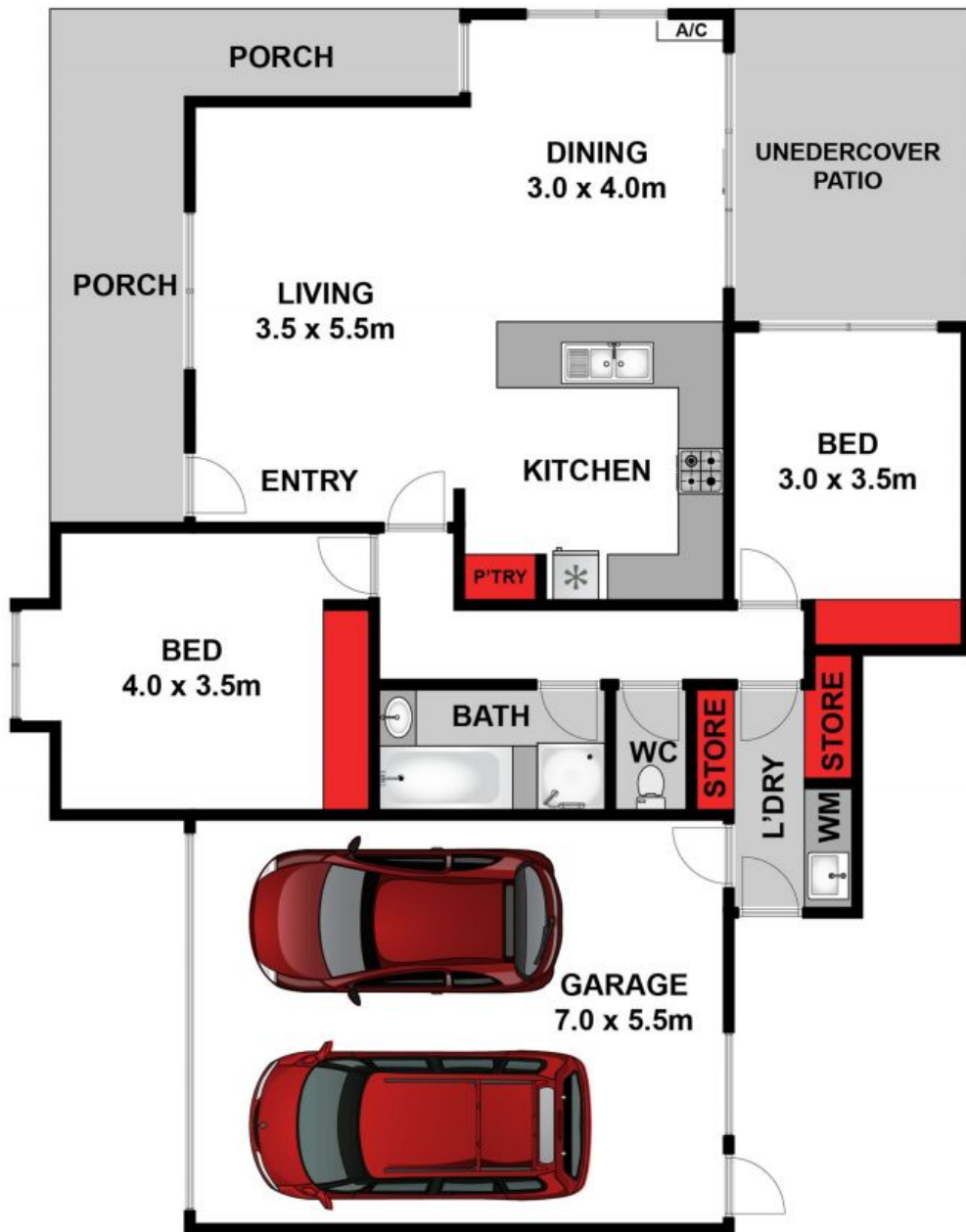
**Price:** \$530,000 - \$560,000  
**Property Type:** House  
**Land:** 316 m2

# HAYDEN

**Karen Purcell**

0448510143

karenp@haydenleopold.com.au



Whilst [bwrn.com.au](http://bwrn.com.au) has made every attempt to ensure the accuracy of the floor plan contained here, measurements are approximate and no responsibility is taken for any error, omission, or mis-statement. This plan is for illustrative purposes only.



**23 Arabando Drive, Leopold**

**HAYDEN**

**23 Arabando Drive**

**LEOPOLD, VIC**