



14 Pomora Avenue TORQUAY, VIC



3



2



2

## First Home - Investment!

This is the ultimate expression of a contemporary Torquay beach residence. Light, fresh open living areas open onto north facing outdoor decks, with clever design maximising the blocks orientation and ocean view.

Easy stroll to the beach and shops? just relax and enjoy Torquay.

- ? Freshly painted in and out
- ? Deck from living room with ocean view
- ? Tiled entrance
- ? Hardwood floors through living areas
- ? Reverse cycle air conditioner
- ? Gas continuous flow hot water
- ? Carpet in all bedrooms
- ? Main living area opens onto north facing deck
- ? Kitchen on second level

**Price:** under contract

**Property Type:** House

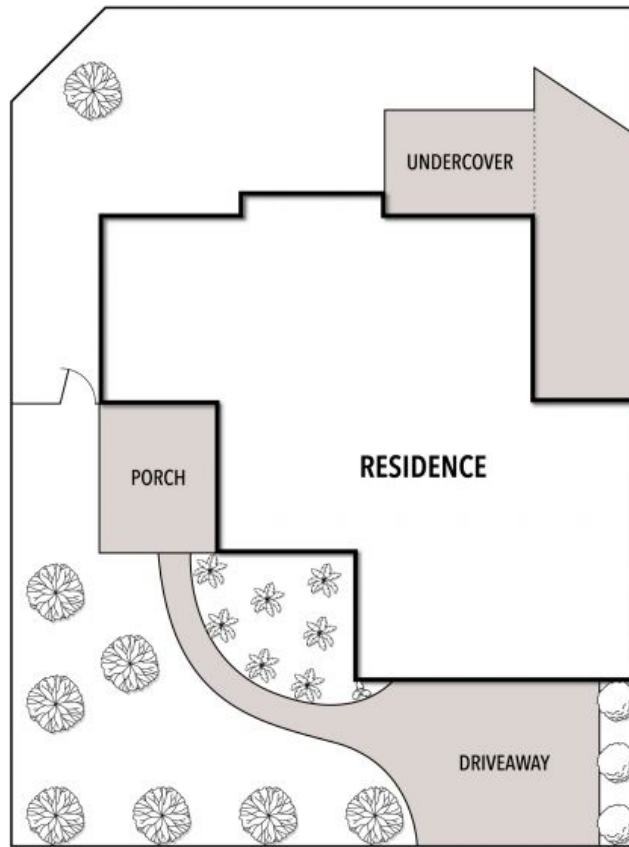
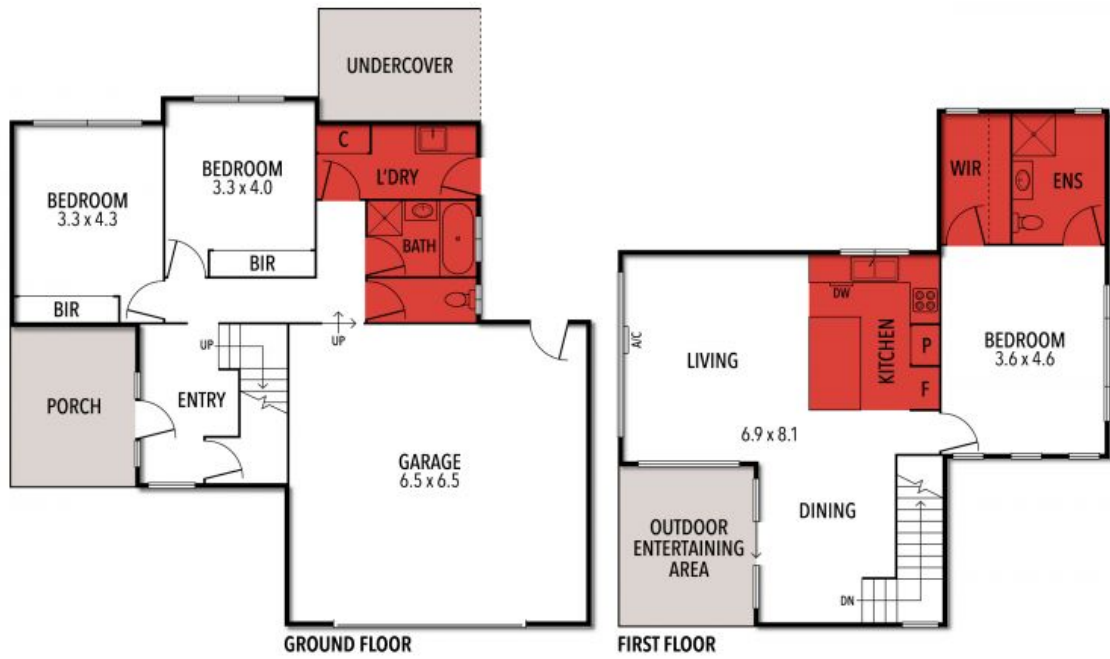
**Land:** 323 m2

# HAYDEN

**Ben Smith**

0423050825

bens@hayden.com.au



THE ABOVE PLAN IS AN ARTIST'S IMPRESSION ONLY, IT INCLUDES ELEMENTS THAT ARE FOR DISPLAY PURPOSES ONLY AND MAY NOT BE TO SCALE. LANDSCAPING SHOWN IS INDICATIVE ONLY. DIMENSIONS ARE APPROXIMATE.