



310/100 The Esplanade TORQUAY, VIC



## Penthouse Living With Ocean Views

Enjoy as your luxury holiday home or permanent residence or even utilise the strong on-site holiday returns, whatever your decision the choice is yours with no restrictions.

Features and facilities of the resort include:

Spacious three bedroom apartment set over two storeys

Two secure undercover car parks

Kitchen has stone bench tops with gas hot plate and electric oven

Two generous balconies one facing North overlooking the pool with great ocean views and the other to the South looking towards Point Danger from the enclosed balcony

Contemporary bathroom plus ensuite to the main bedroom

Spacious open plan lounge/dining/kitchen with fire feature

Outdoor swimming pool/lagoon with spa

One indoor heated lap pool

**Price:** \$1,265,000

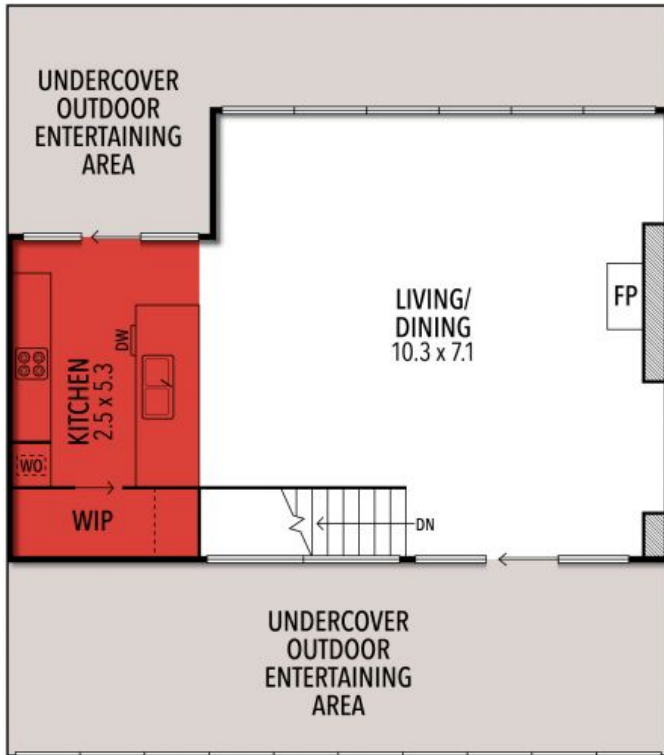
**Property Type:** Apartment

# HAYDEN

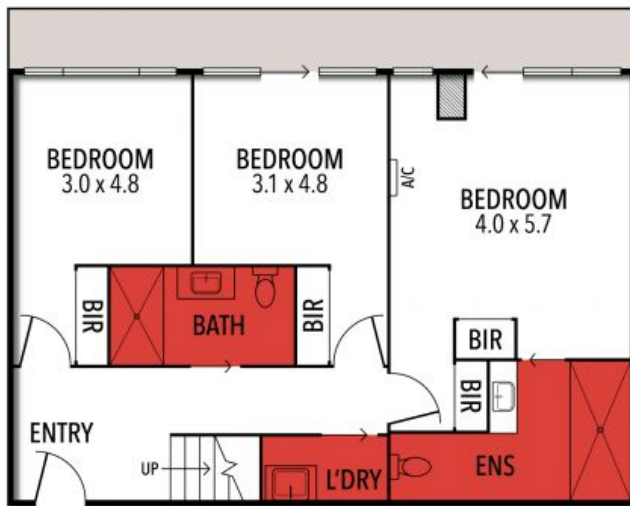
**Ben Smith**

0423050825

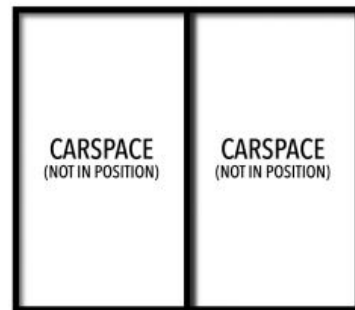
bens@hayden.com.au



FIRST FLOOR



GROUND FLOOR



THE ABOVE PLAN IS AN ARTIST'S IMPRESSION ONLY, IT INCLUDES ELEMENTS THAT ARE FOR DISPLAY PURPOSES ONLY AND MAY NOT BE TO SCALE. LANDSCAPING SHOWN IS INDICATIVE ONLY. DIMENSIONS ARE APPROXIMATE.