



90 Village Green Drive LEOPOLD, VIC



4



2



2

The Perfect Place To Nest Or Invest!

Don't miss this opportunity to embrace carefree family living in Leopold!

The family room provides a generous retreat for everybody to enjoy. So why not treat yourself to a family movie night? Or open the sliding door onto the covered alfresco for breezy summer living? The kitchen features a large walk-in pantry, stainless steel dishwasher and 900mm oven/gas cooktop. The breakfast bar is perfect for those busy school mornings.

Zoned to the front of the home, the Master Bedroom boasts a walk-in robe and en suite with dual vanity. Three additional bedrooms with built-in robes are tucked away in a separate wing, close to the main bathroom and separate toilet. The laundry features storage and external access. You'll be comfortable all year long thanks to ducted heating, evaporative cooling and ceiling fans. The easy-care backyard is home to a large garden shed and rainwater tank, while the remote double lock-up garage features internal access. The wide side gate

Price: \$680,000 - \$720,000

Property Type: House

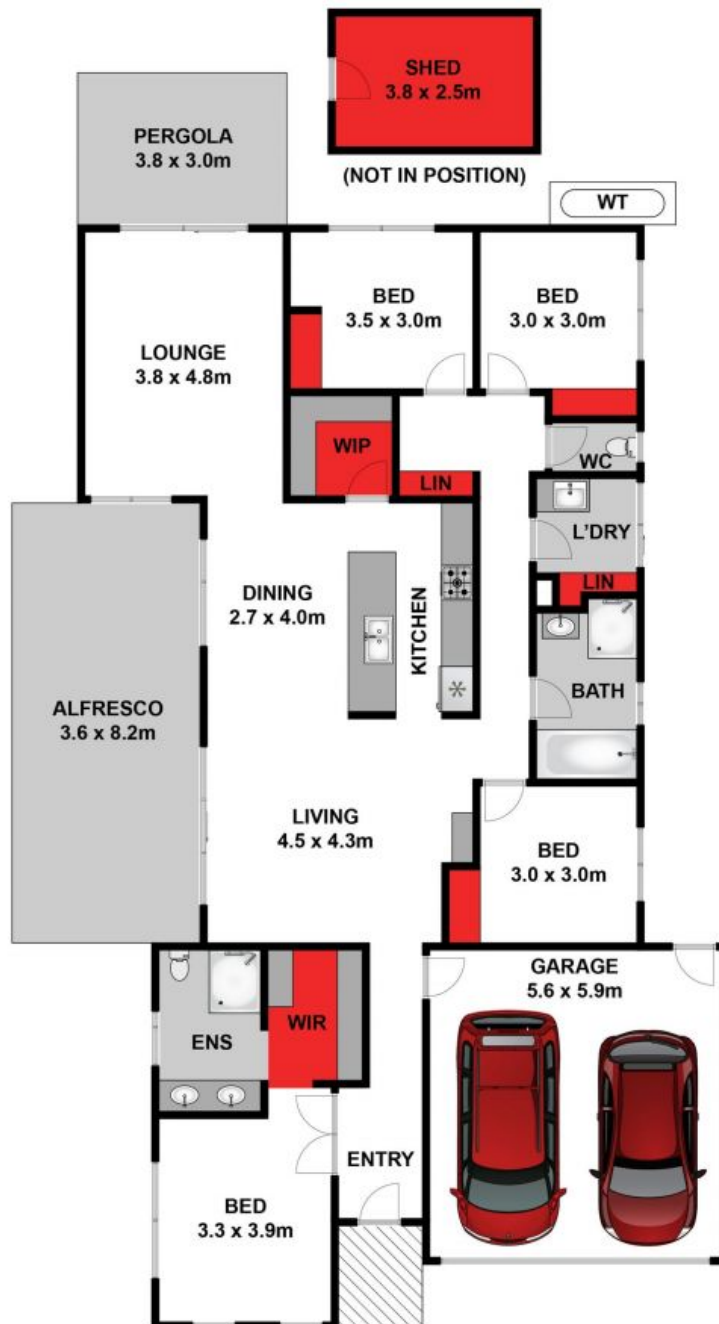
Land: 443 m2

HAYDEN

Karen Purcell

0448510143

karenp@haydenleopold.com.au



Approx House Area 198m²

Whilst bwrn.com.au has made every attempt to ensure the accuracy of the floor plan contained here, measurements are approximate and no responsibility is taken for any error, omission, or mis-statement. This plan is for illustrative purposes only.



90 Village Green Drive, Leopold

HAYDEN

90 Village Green Drive

LEOPOLD, VIC