



2 Heather Court ANGLESEA, VIC



3



2



2

Central Location With Development Opportunity

Tucked just behind the main streets of Anglesea, Heather Court is a sunny oasis set among leafy gums and old school grassy lawns. Only 200m to the Anglesea River, a short stroll to the shopping and dining precinct and easy access to the beach, this home is sure to catch the eye of the holiday seeker and investor alike.

Neat as a pin and ready to move straight in, you'll find a light filled living hub, with garden views from all aspects and 3 bedrooms, 2 with built-in storage. The master suite also has an ensuite, making this lovingly presented home ideal for the holiday rental.

Solid bones, a prime location and a block that feels like it goes on forever, 2 Heather Court will impress and get the creative ideas flowing. Don't let this one slip by, opportuni

Price: Contact Agent
Property Type: House
Land: 934 m2

HAYDEN

Darcy Bennett

0468427359

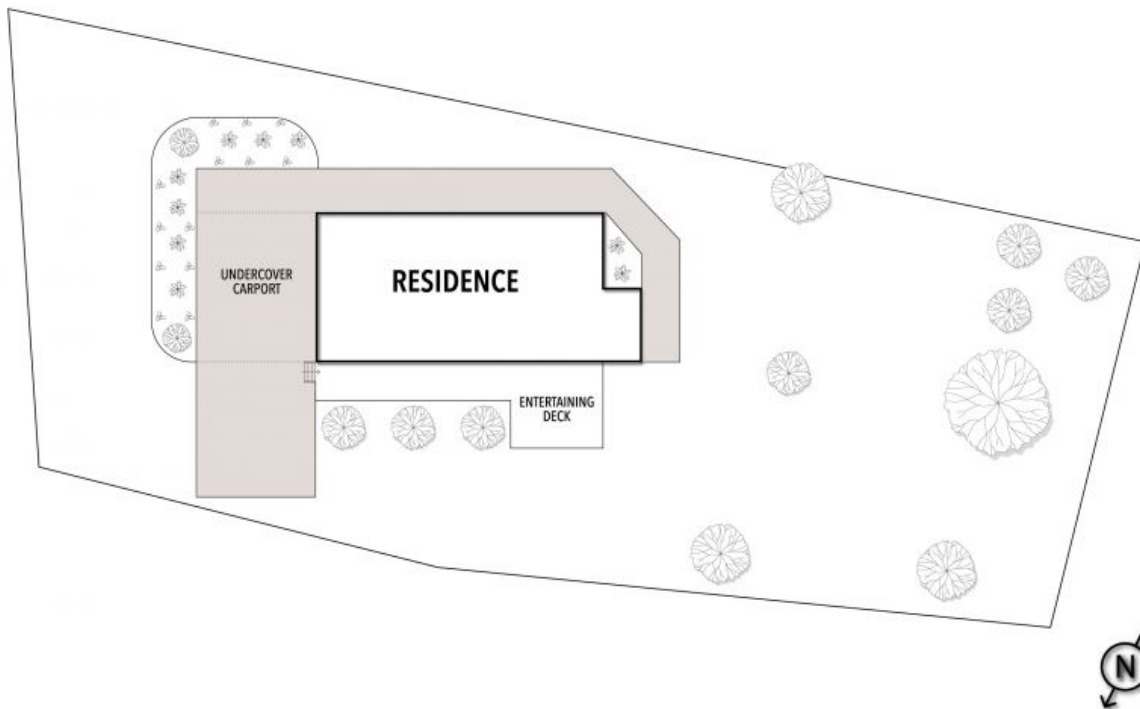
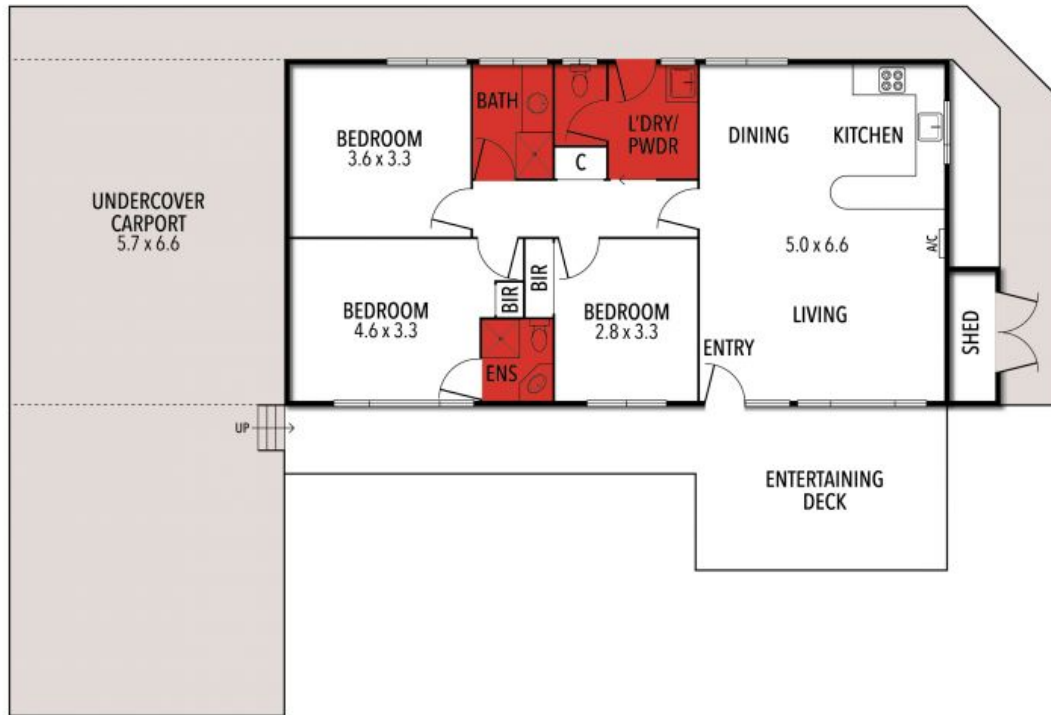
darcyb@hayden.com.au

Bryan Hayden

0417613250

bryanh@hayden.com.au

2 HEATHER COURT, ANGLESEA



THE ABOVE PLAN IS AN ARTIST'S IMPRESSION ONLY, IT INCLUDES ELEMENTS THAT ARE FOR DISPLAY PURPOSES ONLY AND MAY NOT BE TO SCALE. LANDSCAPING SHOWN IS INDICATIVE ONLY. DIMENSIONS ARE APPROXIMATE.