



8 Wattle Grove WALLINGTON, VIC



5



2



2

Your Dream Family Home Awaits?

Spectacular family living is a dream in this one-of-a-kind home set in the private Moorfield Estate conveniently located in Wallington. Located in a peaceful court with lush native gardens, this generous 4041 sqm (approx.) property exudes space and calm offering multiple living areas, thoughtful features and a strong sense of connection to the leafy surrounds.

Throughout this magnificent home, delightful federation touches add a homely charm including stained glass windows, cornices and window furnishings. Comfort year round is assured with ducted gas heating and split system heating/cooling and sustainability has been considered with a handy 5kw solar system. In your spare time, enjoy a hit of tennis at the private court and clubhouse located within the estate or explore the parkland surrounding the property. A short stroll will take you to popular Van Loons Nursery and Cafe or advance a little further to explore the seaside towns of the Bellarine for cafes, restaurants, retail

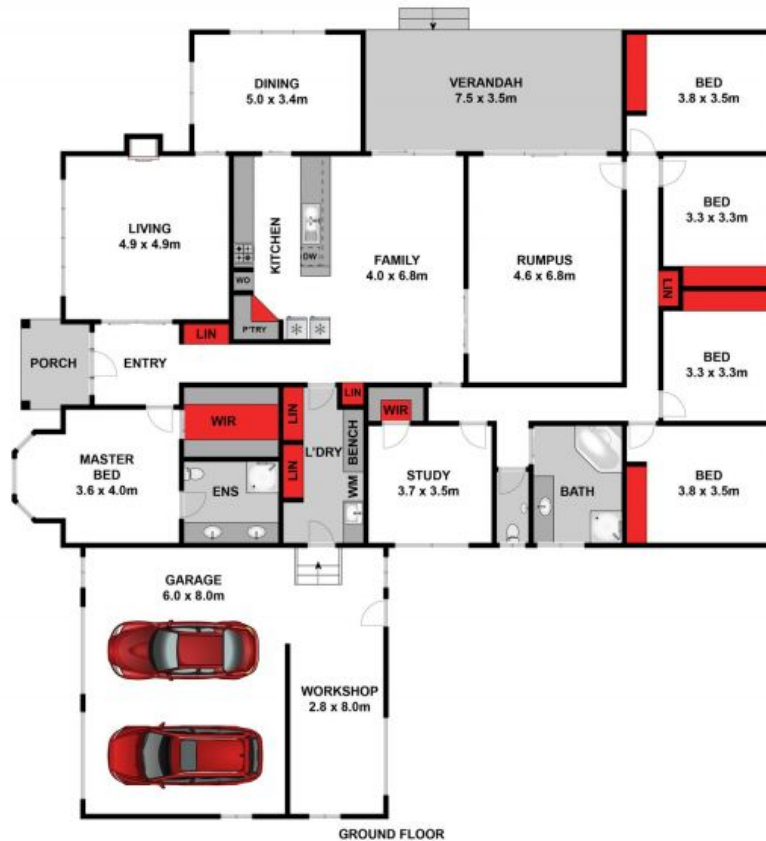
Price: \$1,700,000 - \$1,800,000
Property Type: House
Land: 4041 m2

HAYDEN

Penny Dawson

0448510200

penny@haydenoceanogrove.com.



Whilst bwrn.com.au has made every attempt to ensure the accuracy of the floor plan contained here, measurements are approximate and no responsibility is taken for any error, omission, or mis-statement. This plan is for illustrative purposes only.



8 Wattle Grove, Wallington

HAYDEN

8 Wattle Grove

WALLINGTON, VIC