



9 Yeoman Crescent LEOPOLD, VIC



3



2



2

Picture-Perfect Family Living!

Treat your family to the lifestyle you've been dreaming of in Leopold!

The kitchen is beautifully appointed with stone waterfall benchtops, an abundance of storage and stainless steel appliances (dishwasher, oven, 5-burner gas cooktop, rangehood).

Price: \$710,000 - \$760,000

Property Type: House

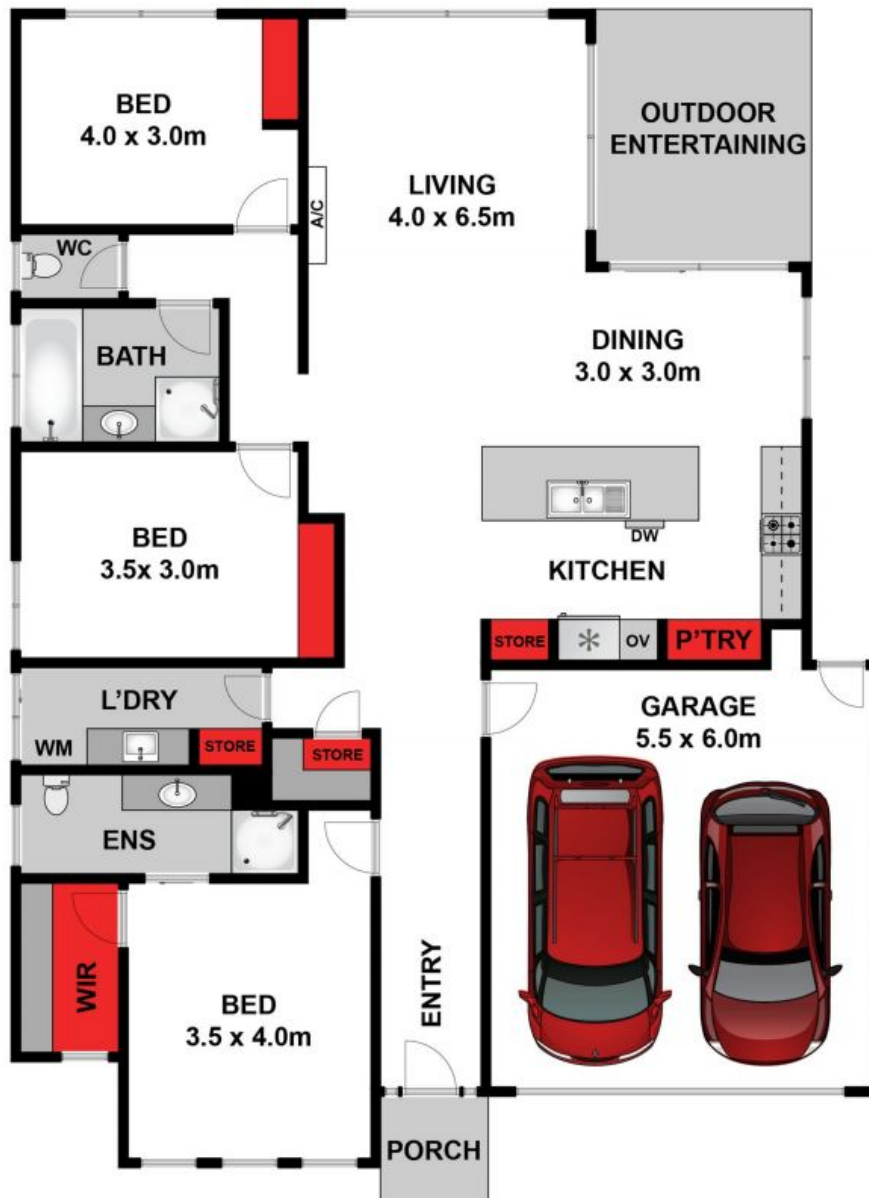
Land: 542 m2

HAYDEN

Karen Purcell

0448510143

karenp@haydenleopold.com.au



Whilst bwrn.com.au has made every attempt to ensure the accuracy of the floor plan contained here, measurements are approximate and no responsibility is taken for any error, omission, or mis-statement. This plan is for illustrative purposes only.



9 Yeoman Crescent, Leopold

HAYDEN

9 Yeoman Crescent

LEOPOLD, VIC