



1/50-52 Cypress Crescent LEOPOLD, VIC



3



2



2

Low-Maintenance Living Has Never Looked So Good!

This residence presents the ultimate fusion of spacious and low-maintenance living!

The remote double garage features internal access and the service courtyard is home to a rainwater tank, while the second courtyard area provides the perfect place to entertain.

This peaceful location places you moments away from all that Leopold has to offer. Public transport is within easy walking distance, while both the Ash Road shops and Gateway Plaza are close by for all your shopping needs. The Gateway Sanctuary entices you to venture outdoors, while Leopold Kindergarten and Leopold P.S. are within easy reach for young families. Just jump in the car, and you'll soon be in the heart of Geelong or exploring the deli

Price: \$580,000 - \$615,000

Property Type: House

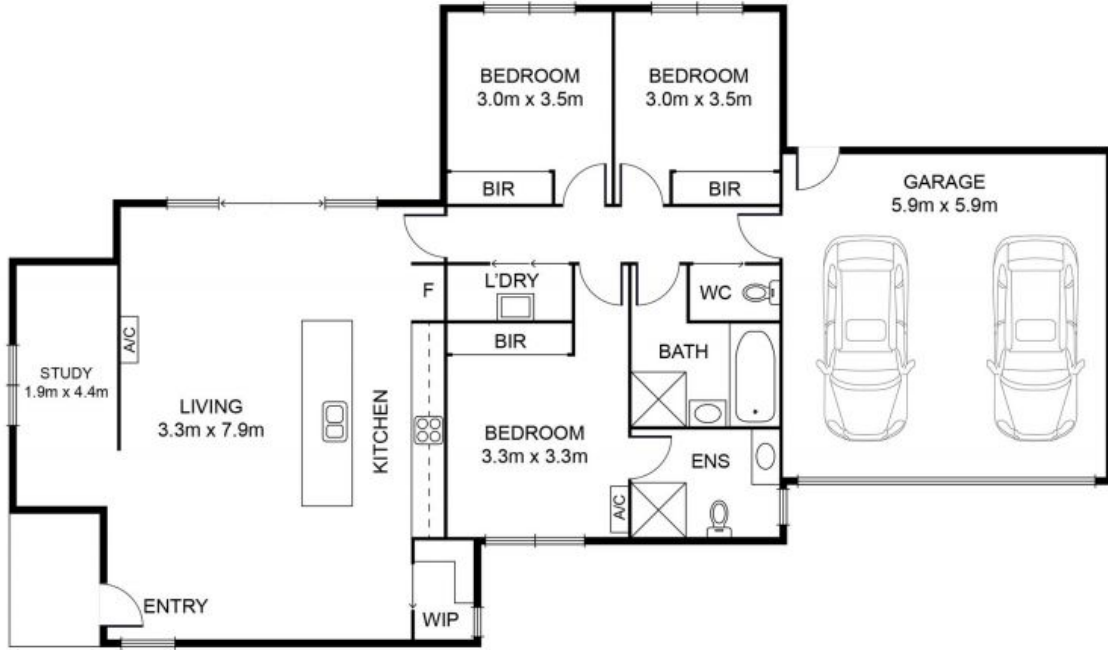
Land: 297 m2

HAYDEN

Karen Purcell

0448 510 143

karenp@haydenleopold.com.au



Disclaimer: Please note plans are indicative only and not drawn to exact scale. All dimensions are approximate. Potential buyers should satisfy themselves of any pertinent matters.