



2 Moondara Court LEOPOLD, VIC



4



2



2

## Space, Privacy And Convenience With Room For A Boat Or Caravan

Year-round comfort is guaranteed thanks to central heating, evaporative cooling, ceiling fans and a gas log fire in the front lounge room. Keep power bills to a minimum with a 12-panel solar array and solar hot water.

Kids will love the multiple living areas to spread out, the enclosed outdoor areas and the fabulous parkland practically on your doorstep. For families seeking a private, spacious home in a quiet, relaxed neighbourhood, look no further!

**Price:** \$780,000 - \$840,000

**Property Type:** House

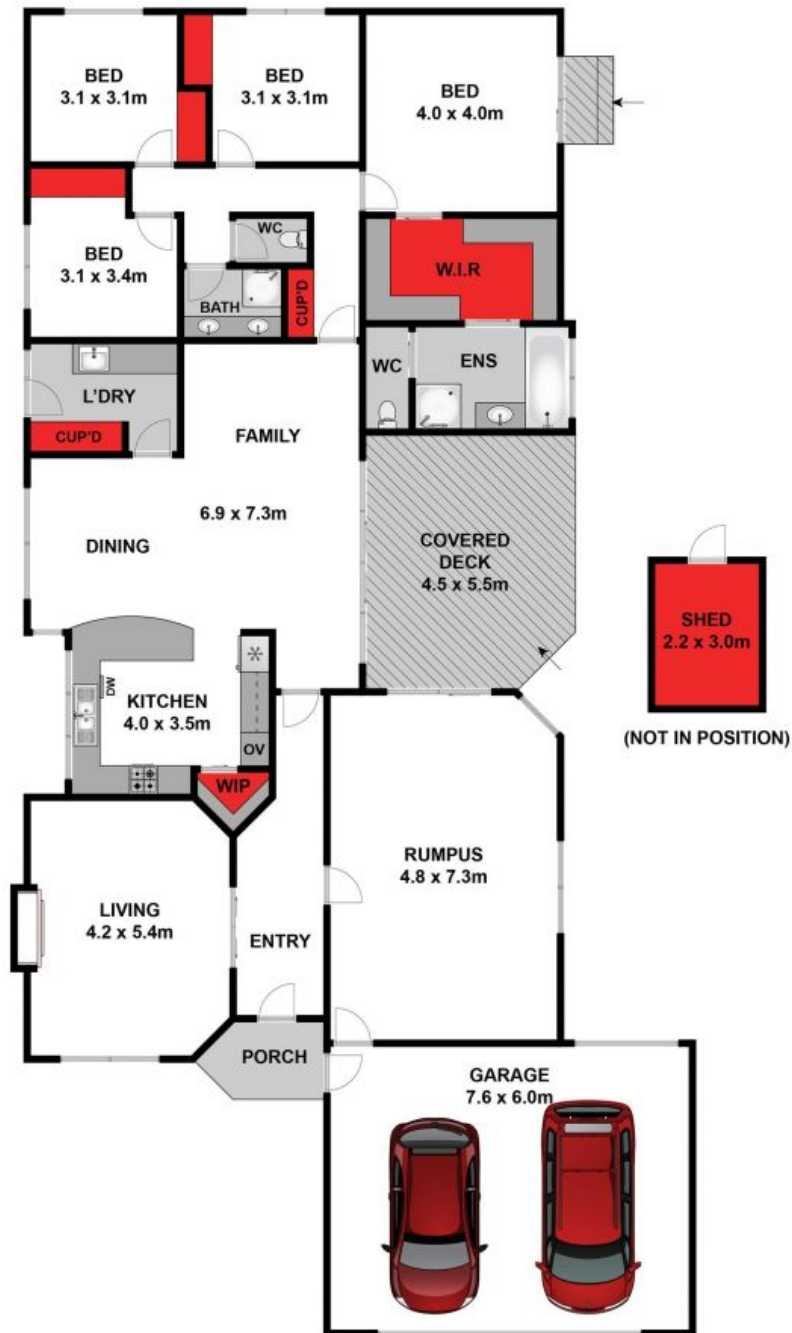
**Land:** 721 m2

# HAYDEN

**Karen Purcell**

0448510143

karenp@haydenleopold.com.au



Whilst [bwrn.com.au](http://bwrn.com.au) has made every attempt to ensure the accuracy of the floor plan contained here, measurements are approximate and no responsibility is taken for any error, omission, or mis-statement. This plan is for illustrative purposes only.



**2 Moondara Court, Leopold**

**HAYDEN**

**2 Moondara Court**

**LEOPOLD, VIC**