



28 Longview Avenue LEOPOLD, VIC



3



1



2

## Untapped Potential In Amazing location

Private Inspections Only

This 1960s brick home has amazing, untapped potential on over 700 sqm (approx.) in an enviable location in Leopold, the gateway to the best that the Bellarine has to offer! Within easy commuting distance to Geelong in a Residential Growth Zone, and close to local shops, schools and amenities, this property is nothing less than a diamond in the rough, waiting for the right polish.

Inspection time by booking only (call or email) and will be displayed on this page. View times are subject to cancellation/change until 12:00PM on the day of the open. We advise you check the listing on the day, to ensure the property is still available prior to inspect

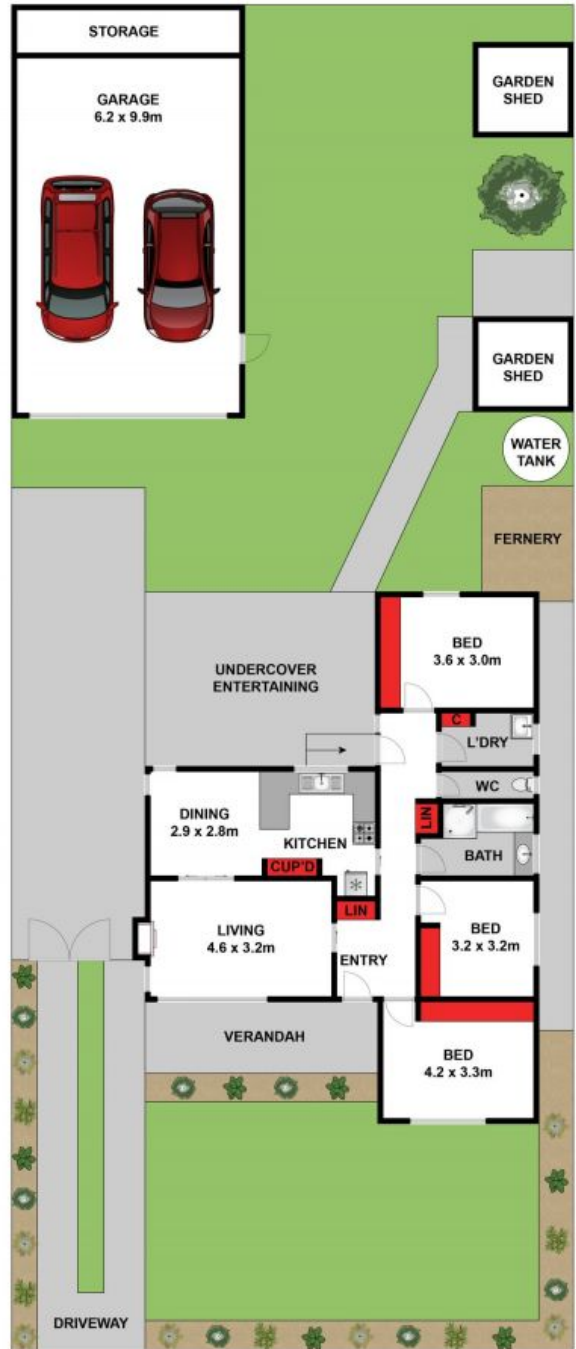
**Price:** \$625,000  
**Property Type:** House  
**Land:** 716 m2

# HAYDEN

**Karen Purcell**

0448510143

karenp@haydenleopold.com.au



Whilst [bwrn.com.au](http://bwrn.com.au) has made every attempt to ensure the accuracy of the floor plan contained here, measurements are approximate and no responsibility is taken for any error, omission, or mis-statement. This plan is for illustrative purposes only.



**28 Longview Avenue, Leopold**

**HAYDEN**

**28 Longview Avenue**

**LEOPOLD, VIC**