



12 Rosella Court OCEAN GROVE, VIC



3



1



2

Sub-Divide, Extend or Live the Simple Life

Nestled among mature yellow gums, this 834m² (approx.) property in one of the sought-after 'bird courts' provides all the charm of old Ocean Grove. The site's gentle undulation, north-facing aspect, and central court location create a quiet, calm, and light-filled oasis.

Enjoy the tranquility of this prime location while still being close to Ocean Grove's many amenities. Take a stroll to the main street for brunch or take a walk to the beach, estuary or the Blue Waters lake reserve.

Price: \$1,100,000 - \$1,200,000

Property Type: House

Land: 834 m²

HAYDEN

Lynley Bassett

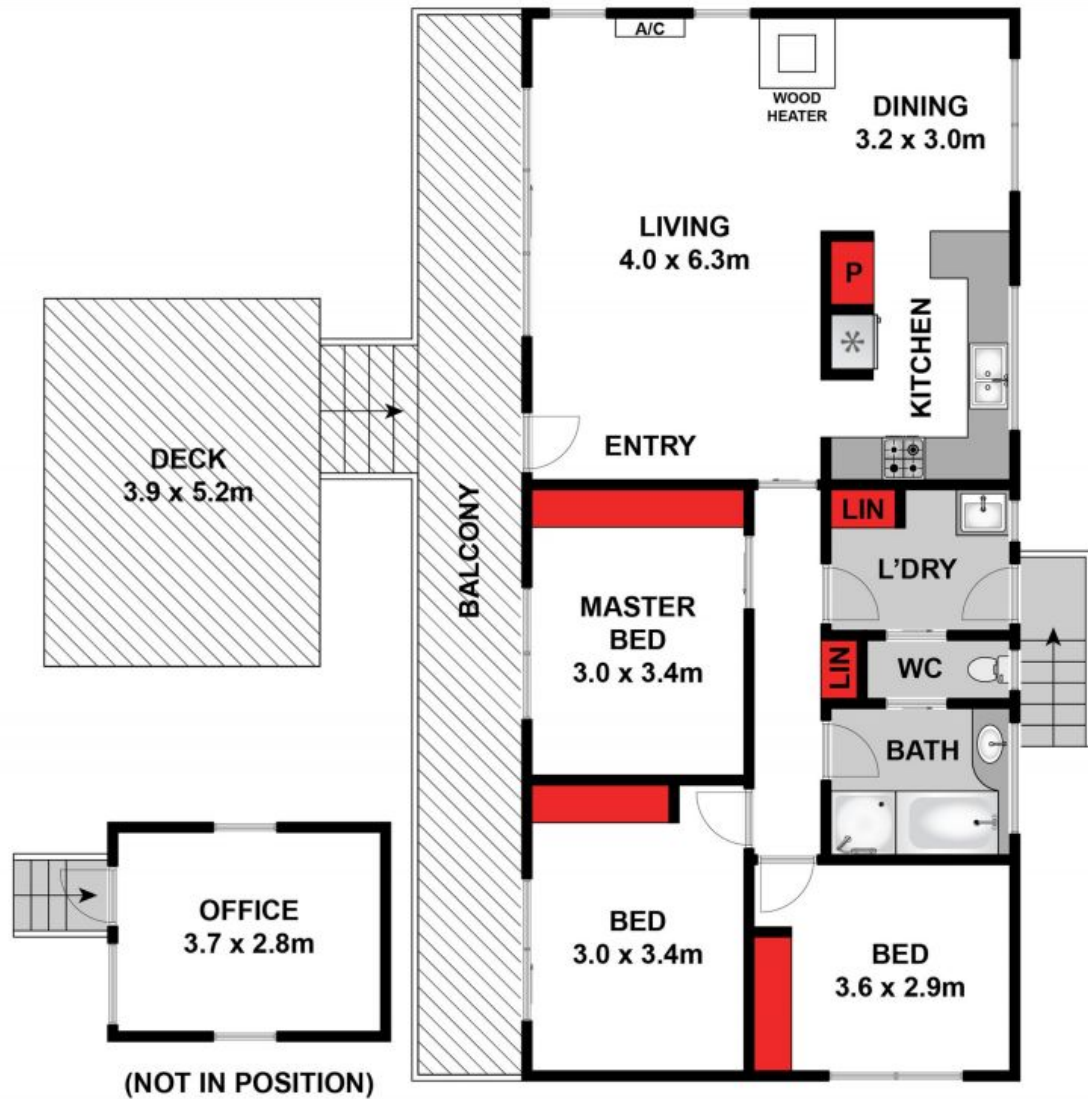
0448515925

lynley@haydenocean Grove.com.au

Hugh McKewan

0417538779

hugh@haydenocean Grove.com.au



Whilst bwrn.com.au has made every attempt to ensure the accuracy of the floor plan contained here, measurements are approximate and no responsibility is taken for any error, omission, or mis-statement. This plan is for illustrative purposes only.



12 Rosella Court, Ocean Grove

HAYDEN

12 Rosella Court

OCEAN GROVE, VIC