



118 Country Club Dr CLIFTON SPRINGS, VIC



3



1



4

Purchase your Own Piece of the Bellarine!

With Clifton Springs Golf Club on your doorstep and quiet bay beaches a stone's throw away, this three bedroom home with a retro vibe presents a chance for buyers to enjoy the peaceful surrounds as a weekender, investment opportunity or chance to update (STCA) and maximise the block to create a bespoke residence.

Price: \$560,000 - \$570,000

Property Type: House

Land: 604 m2

HAYDEN

Penny Dawson

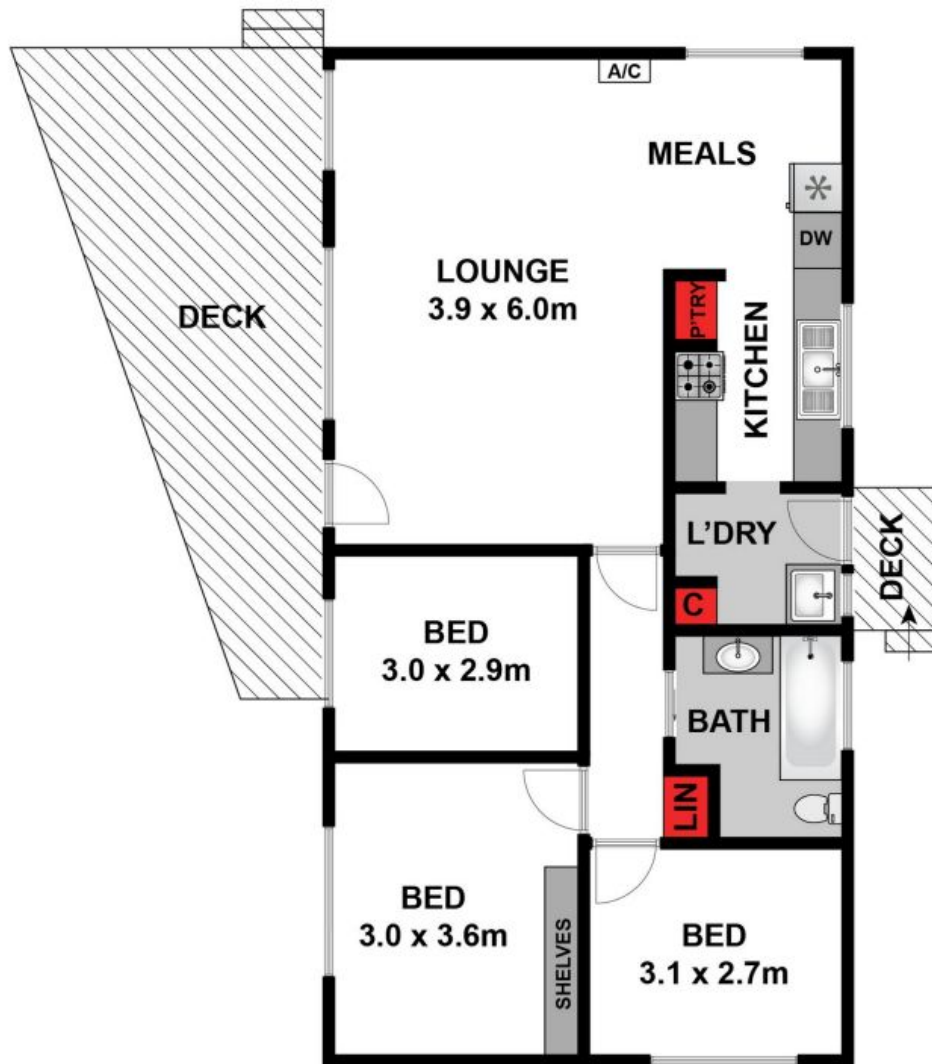
0448510200

penny@haydenoceanogrove.com.au

Hugh McKewan

0417538779

hugh@haydenoceanogrove.com.au



Approx House Area 80m²

Whilst bwrn.com.au has made every attempt to ensure the accuracy of the floor plan contained here, measurements are approximate and no responsibility is taken for any error, omission, or mis-statement. This plan is for illustrative purposes only.

118 Country Club Drive, Clifton Spring

HAYDEN

118 Country Club Dr

CLIFTON SPRINGS, VIC