



1/796 Bellarine Highway LEOPOLD, VIC



4



2



2

Just Simply Charming...Contact for Private Inspection

Occupying approx. 649m², this character home will delight from the very first glance!

The surrounding gardens are simply charming, with mature trees creating privacy from the street front. Tucked away at the side of the home, the veggie gardens are ready for your additions. The double carport provides off-street parking via Ash Road.

Ideally located within walking distance to both the Ash Road shops and Dorothy Street shops, you don't have to venture far to treat yourself to a coffee or run some errands. Leopold Kinder and Leopold Primary School are a short stroll away for families, while the Gateway Plaza leaves you spoilt for choice with shopping and dining options. To top it all off,

Price: \$630,000 - \$680,000

Property Type: House

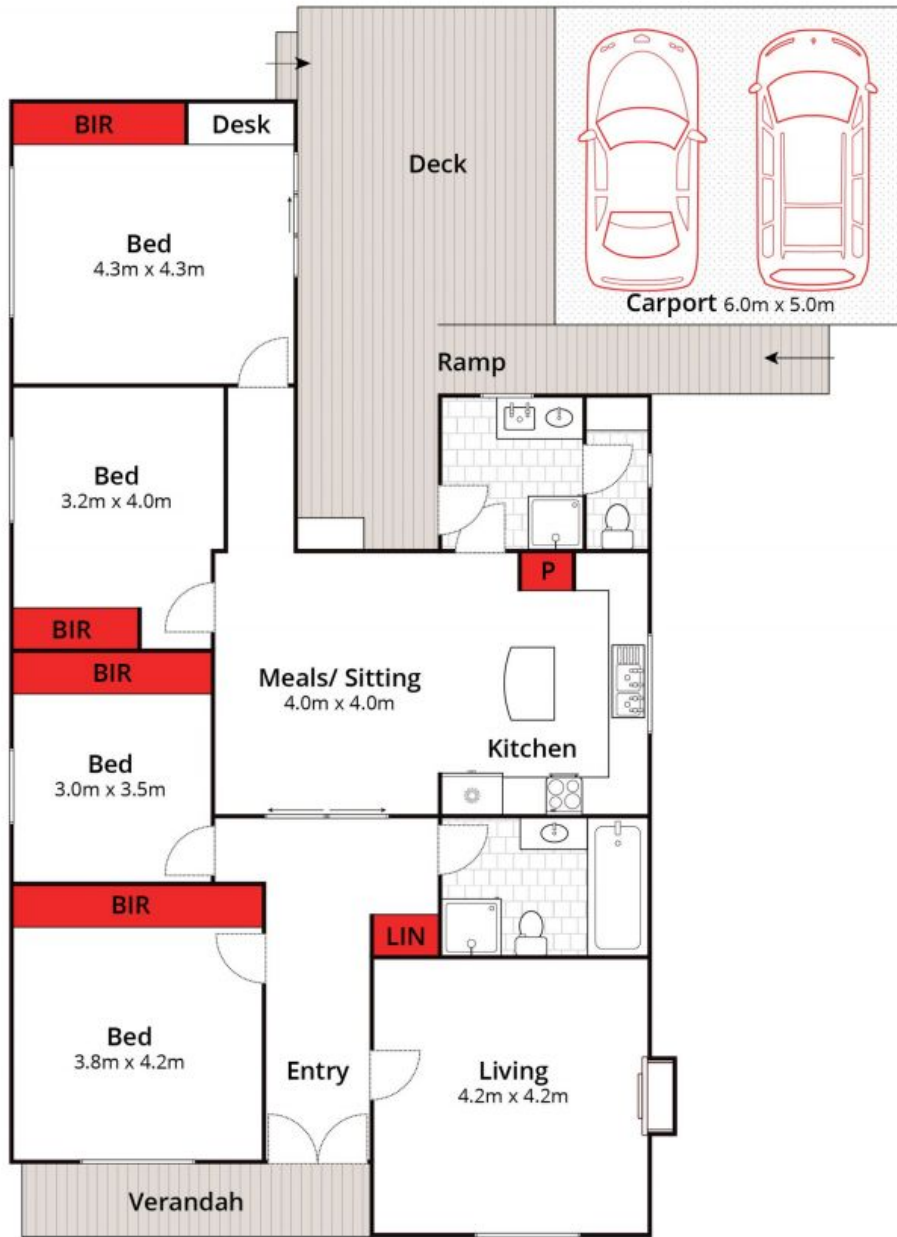
Land: 649 m²

HAYDEN

Karen Purcell

0448510143

karenp@haydenleopold.com.au



Whilst bwrn.com.au has made every attempt to ensure the accuracy of the floor plan contained here, measurements are approximate and no responsibility is taken for any error, omission, or mis-statement. This plan is for illustrative purposes only.

1/796 Bellarine Highway, Leopold

HAYDEN

1/796 Bellarine Highway

LEOPOLD, VIC