



2/31 Cornthwaite Crescent LEOPOLD, VIC



3



1



1

## The Perfect First Home or Downsizer! Private Inspections only.

Tucked away for privacy, this one-owner residence presents low-maintenance living that feels like home!

Beautiful gardens lead you down the driveway, where the cottage-style home makes a charming first impression. The classic interiors are in spotless condition throughout, with the front lounge enticing you to sit back and relax. Northern light sweeps through the dining room, while the kitchen features a step-in pantry and appliances (dishwasher, wall oven, gas cooktop, rangehood).

The main bedroom will delight with built-in robes and direct bathroom access. The well-designed layout is complete with two additional bedrooms (one with built-in robes), a generous laundry and separate toilet. You'll be in comfort all year long thanks to ducted heating, two air conditioners (one reverse-cycle) and ceiling fans. Security cameras and an alarm

**Price:** \$545,000 - \$565,000

**Property Type:** House

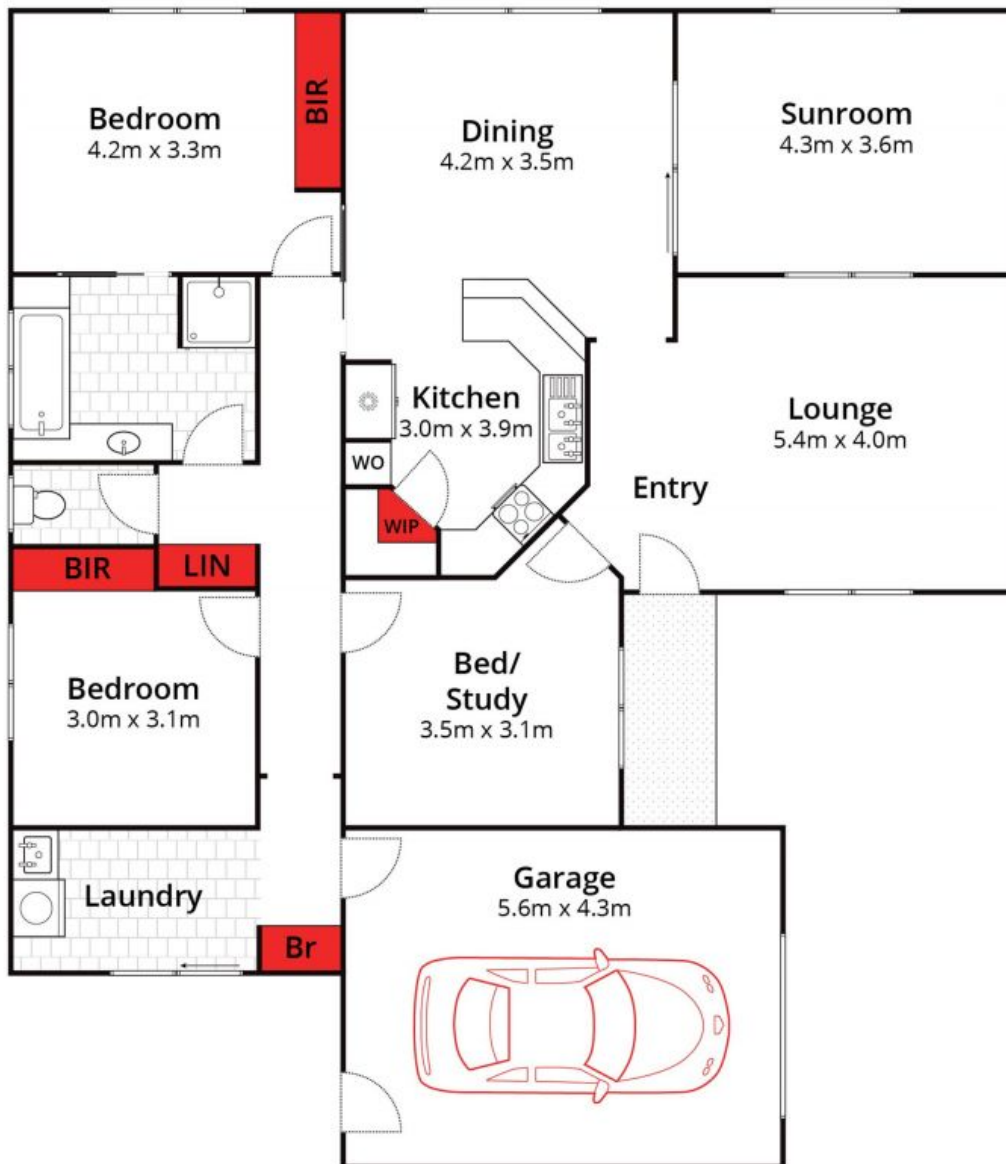
**Land:** 441 m2

# HAYDEN

**Karen Purcell**

0448510143

karenp@haydenleopold.com.au



Whilst [bwrn.com.au](http://bwrn.com.au) has made every attempt to ensure the accuracy of the floor plan contained here, measurements are approximate and no responsibility is taken for any error, omission, or mis-statement. This plan is for illustrative purposes only.

**2/31 Cornthwaite Crescent, Leopold** **HAYDEN**

**2/31 Cornthwaite Crescent**

**LEOPOLD, VIC**