



12 Darrambal Crescent LEOPOLD, VIC



3



1



1

Ready To Make Your Own!

Bursting with potential, this property presents a terrific opportunity on a corner allotment of approx. 618m2!

The home invites you to move right in or makes the ideal investment property. The front lounge flows into the dining/kitchen zone, where the kitchen is well equipped with a built-in pantry and cooking appliances (oven, gas cooktop, rangehood). Three bedrooms (main with built-in robes) share close access to the bathroom, while the laundry and separate toilet complete the layout. A split-system air conditioner provides modern comfort.

A touch of TLC could swiftly transform the entertaining deck and spacious backyard into your dream outdoor setting. You'll love that the backyard is ideally positioned to capture the north-western sunshine. The single drive-through garage provides backyard vehicle access, while buyers may be inspired to add vehicle access via Darrambal Crescent for boat/cara

Price: \$580,000 - \$610,000

Property Type: House

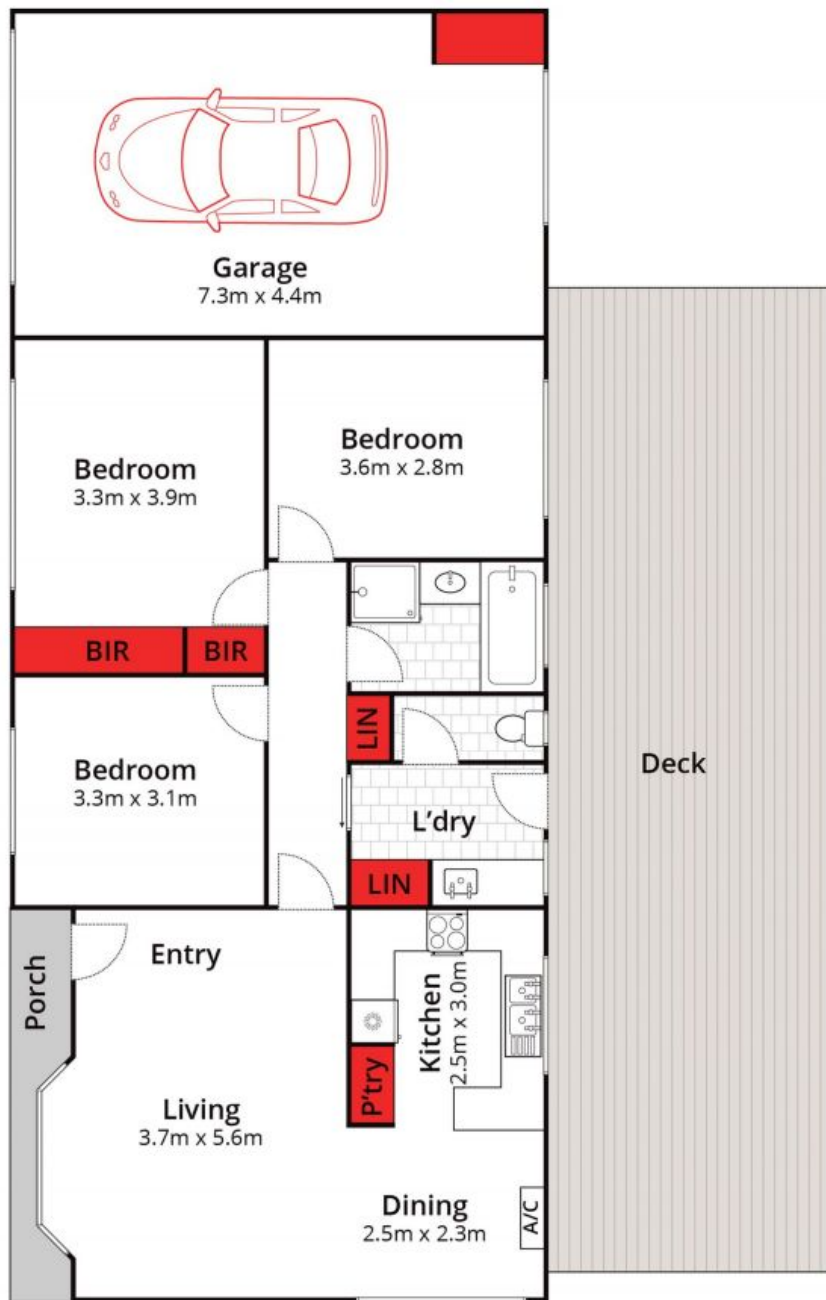
Land: 618 m2

HAYDEN

Karen Purcell

0448510143

karenp@haydenleopold.com.au



Whilst bwrn.com.au has made every attempt to ensure the accuracy of the floor plan contained here, measurements are approximate and no responsibility is taken for any error, omission, or mis-statement. This plan is for illustrative purposes only.



12 Darrambal Crescent, Leopold

HAYDEN

12 Darrambal Crescent

LEOPOLD, VIC