



45 Newcombe Street DRYSDALE, VIC



5



2



4

Peaceful Homestead Moments From Town Centre

Positioned to appreciate sublime peace and quiet, while being a convenient stone's throw from the town centre, this carefully designed five bedroom family home is guaranteed to make a lasting impression. Traditional timber veranda's give hint to the charm and character that lies within; bordered by pretty seasonal blooms and towering hedges. The interior offers a continued quality, accented by high ceilings, and stylish decorative accents throughout.

Position perfect exists here on this 726m2 (approx.) allotment, just a short 5 minute stroll to the Drysdale township for all practical and recreational needs. Zoned for preferred primary and secondary schools, sitting on the fringe of award winning wineries and restaurants, beautiful bayside beaches and The Bellarine Rail Trail, and just 20 mins (approx.) t

Price: \$890,000 - \$950,000
Property Type: House
Land: 727 m2

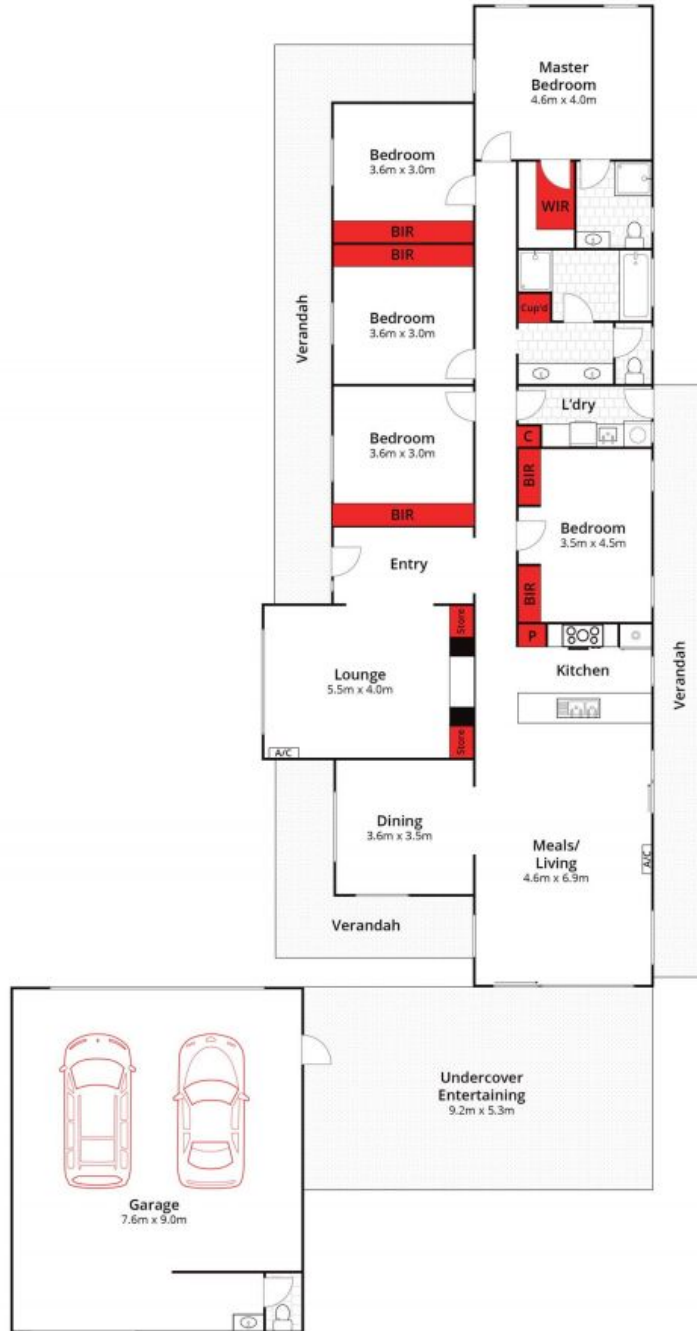


Hayden Real Estate Karen Purcell

0448 510 143

Ocean Grove
 samh@hayden.com.au

karenp@haydenleopold.com.au



Whilst bwrn.com.au has made every attempt to ensure the accuracy of the floor plan contained here, measurements are approximate and no responsibility is taken for any error, omission, or mis-statement. This plan is for illustrative purposes only.



45 Newcombe Street, Drysdale

HAYDEN

45 Newcombe Street

DRYSDALE, VIC