



26 Donvale Drive LEOPOLD, VIC



3



2



2

The Carefree Family Lifestyle You've Been Craving!

Located a short walk to Leopold Primary School, this home is the perfect place to raise a family!

The front lounge/dining room creates a generous setting for relaxation, while northern light sweeps through the open plan living/meals/kitchen zone. Parents will love that they can sit back the couch as they watch little ones playing in the spacious backyard. The kitchen takes care of all your cooking needs with two built-in pantries, a stainless steel dishwasher and cooking appliances.

Overlooking the front garden via bay windows, the main bedroom features a walk-in robe and en suite. Two additional bedrooms with built-in robes are tucked away in a separate wing, close to the main bathroom and powder room. The laundry will impress with ample storage. Two split-system air conditioners, two wall heaters and ceiling fans ensure year-round com

Price: \$590,000 - \$620,000

Property Type: House

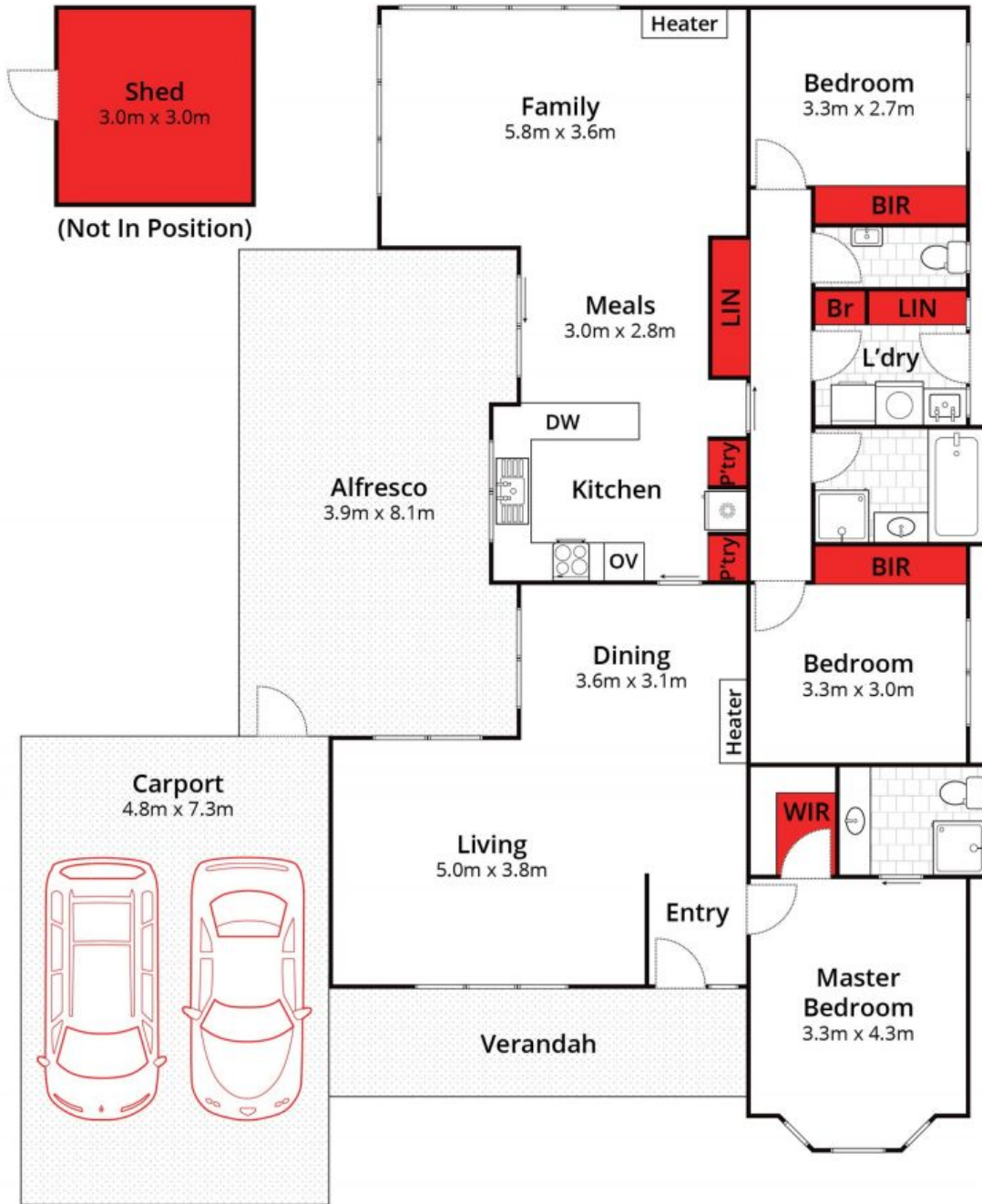
Land: 731 m2

HAYDEN

Karen Purcell

0448510143

karenp@haydenleopold.com.au



Whilst bwrn.com.au has made every attempt to ensure the accuracy of the floor plan contained here, measurements are approximate and no responsibility is taken for any error, omission, or mis-statement. This plan is for illustrative purposes only.



26 Donvale Drive, Leopold

HAYDEN

26 Donvale Drive

LEOPOLD, VIC