



8 Barimba Court LEOPOLD, VIC



**PRICE REDUCTION- Vendors Say Sell!**

Have you been dreaming of superb family living? Boasting sensational entertaining options, a huge backyard and ample off-street parking, this property has something to impress everyone on approx. 997m2!

The large kitchen makes a stunning statement with matte black cabinetry, a tiled splashback, abundant storage and stainless steel appliances (dishwasher, 900mm oven, 5-burner gas cooktop).

Inspection time by booking only (call or email) and will be displayed on this page. View times are subject to cancellation/change until 12:00PM on the day of the open. We advise you check the listing on the day, to ensure the property is still available prior to inspect

**Price:** \$690,000 - \$740,000  
**Property Type:** House  
**Land:** 997 m2



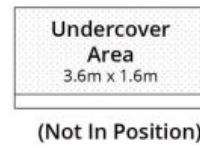
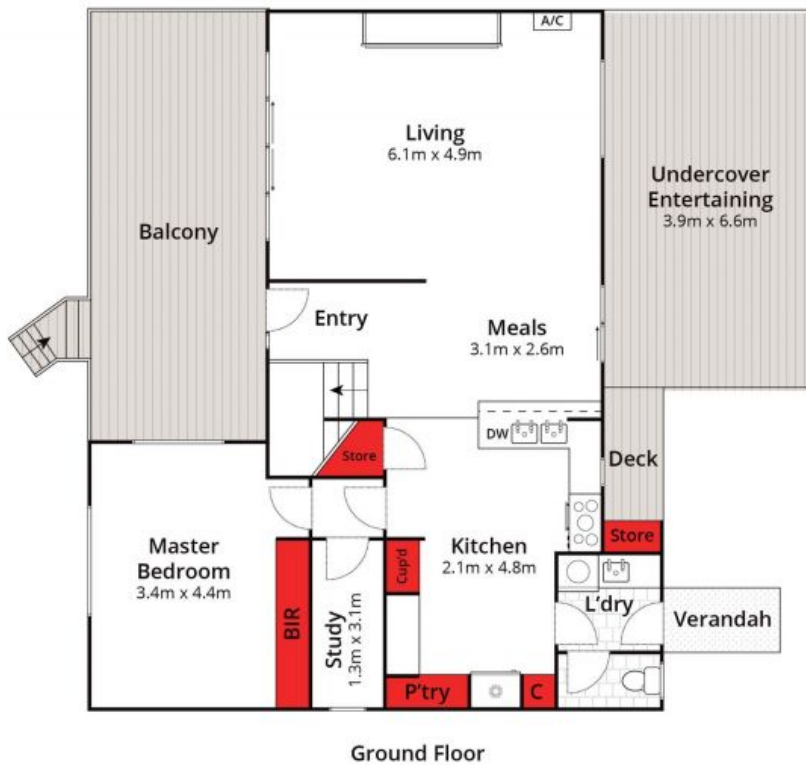
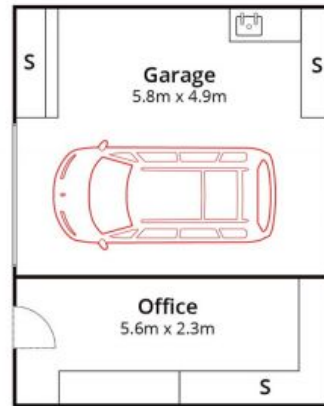
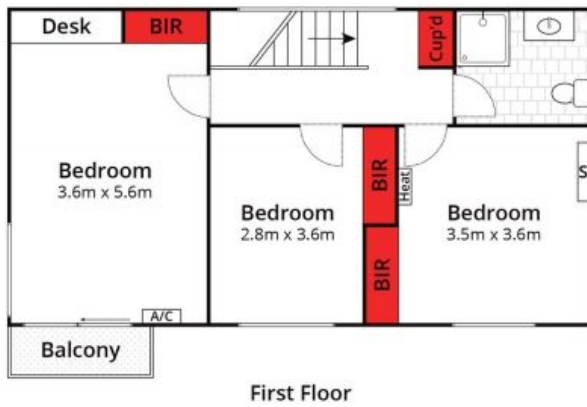
**Karen Purcell**

**David Pemberton**

0448510143

0419874029

karenp@haydenleopold.com.au david@haydenleopold.com.au



Whilst [bwrn.com.au](http://bwrn.com.au) has made every attempt to ensure the accuracy of the floor plan contained here, measurements are approximate and no responsibility is taken for any error, omission, or mis-statement. This plan is for illustrative purposes only.



8 Barimba Court, Leopold

**HAYDEN**

8 Barimba Court

LEOPOLD, VIC