



2/9 Dane Court LEOPOLD, VIC



2



1



1

## A Low-Maintenance Gem

Tucked away in a peaceful court, this residence presents low-maintenance living with a functional floorplan.

Located in a block of only two units, you'll instantly fall in love with the sense of peace and privacy, with high ceilings and downlights enhancing the updated interiors. Western light sweeps through the living room and dining/kitchen zone, which both provide generous settings for everyday enjoyment. The kitchen features an oven/electric cooktop and canopy rangehood.

Two bedrooms with built-in robes share close access to the bathroom, while the laundry and separate toilet add the final touch to the layout. A split-system air conditioner and ceiling fans keep you comfortable in all seasons. The paved courtyard sets the scene for casual gatherings with friends, while the front verandah is the perfect place to enjoy peaceful afternoons. The easy-care gardens are home to a selection of fruit trees, while solar pa

**Price:** \$430,000 - \$470,000

**Property Type:** House

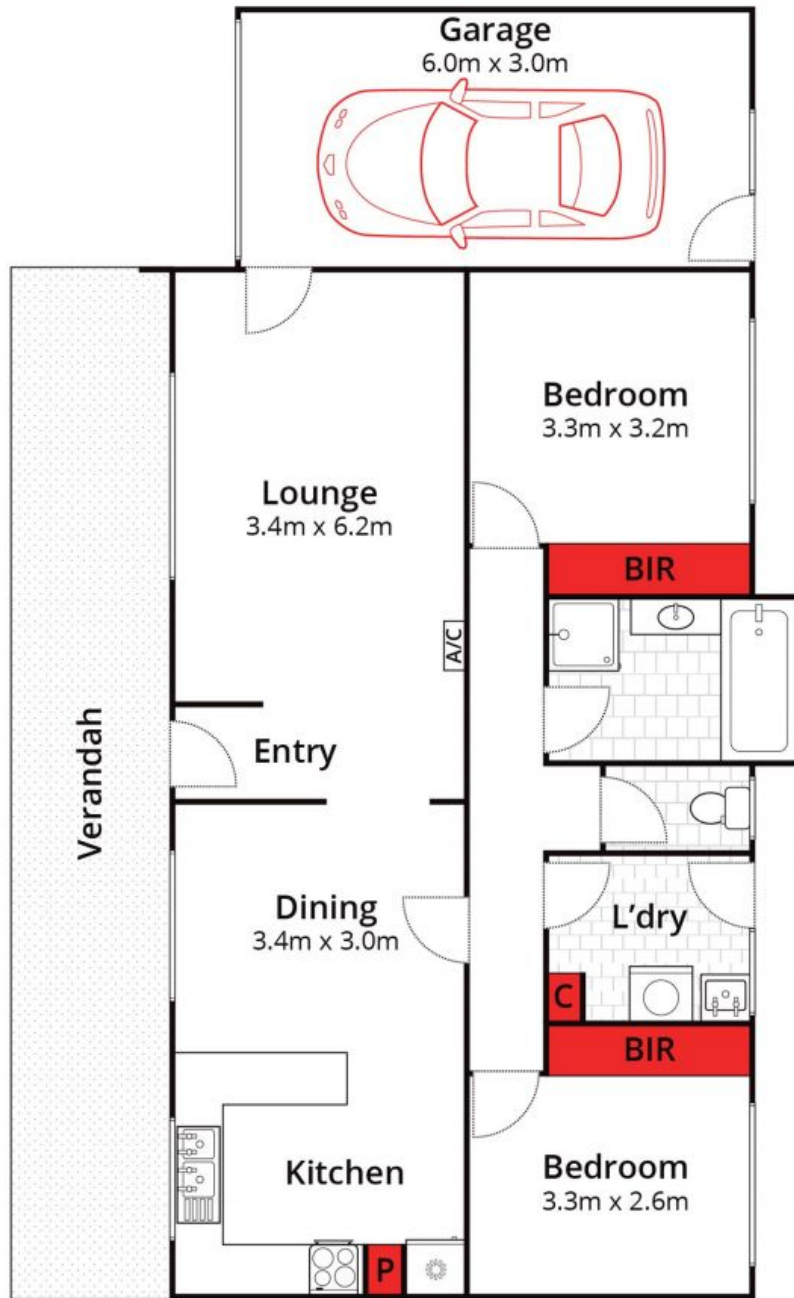
**Land:** 195 m2

# HAYDEN

**Karen Purcell**

0448510143

karenp@haydenleopold.com.au



Whilst [bwrn.com.au](http://bwrn.com.au) has made every attempt to ensure the accuracy of the floor plan contained here, measurements are approximate and no responsibility is taken for any error, omission, or mis-statement. This plan is for illustrative purposes only.



**2/9 Dane Court, Leopold**

**HAYDEN**

**2/9 Dane Court**

**LEOPOLD, VIC**