



11 Nell Link LEOPOLD, VIC



3



2



2

## Peace & Privacy For The Whole Family!

Located in a peaceful pocket of Leopold, this treasured family home promises the carefree lifestyle you've been craving!

Zoned to the front of the home, the spacious main bedroom features a walk-in robe and en suite with spa bath. Two additional bedrooms with built-in robes are tucked away in a separate wing, along with the versatile kid's retreat/home office. The generous laundry, main bathroom and separate toilet complete the layout. Ducted heating keeps you cosy during the cooler months.

With mature hedges surrounding the backyard, the whole family will fall in love with the overwhelming sense of peace and privacy. The side garden will delight green thumbs with citrus trees, raised veggie gardens and a thriving passionfruit vine. The remote double garage provides backyard vehicle access, while the powered garden shed and rainwater tank with

**Price:** \$750,000 - \$810,000

**Property Type:** House

**Land:** 592 m2

# HAYDEN

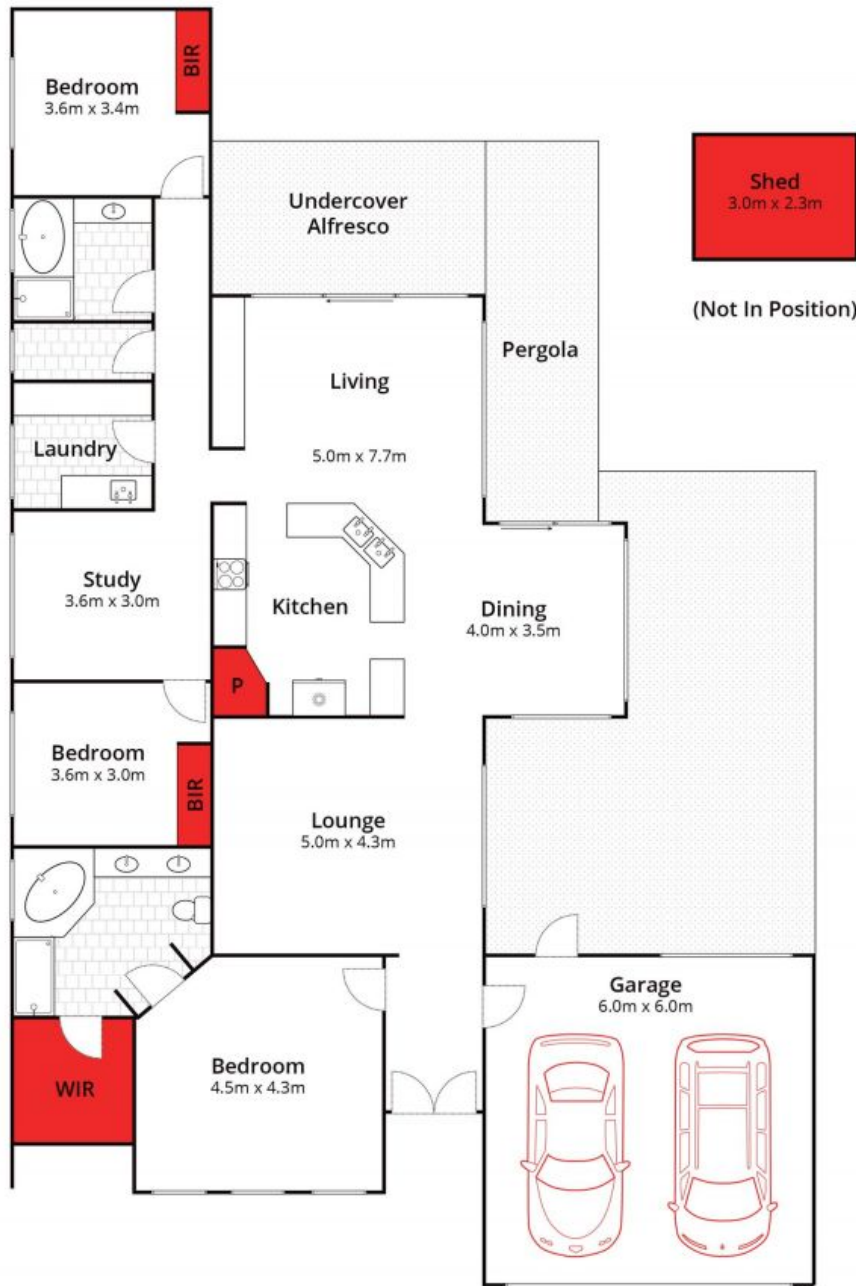
**Hayden Real Estate Karen Purcell**

0448510143

**Leopold**

samn@hayden.com.au

karenp@haydenleopold.com.au



Whilst [bwrn.com.au](http://bwrn.com.au) has made every attempt to ensure the accuracy of the floor plan contained here, measurements are approximate and no responsibility is taken for any error, omission, or mis-statement. This plan is for illustrative purposes only.



**11 Nell Link, Leopold**

**HAYDEN**

11 Nell Link

LEOPOLD, VIC