



4/103 Gertrude Street GEELONG WEST, VIC

 2  1  1

Well Positioned and Proportioned

Price: \$300,000 - \$325,000  
Property Type: Unit

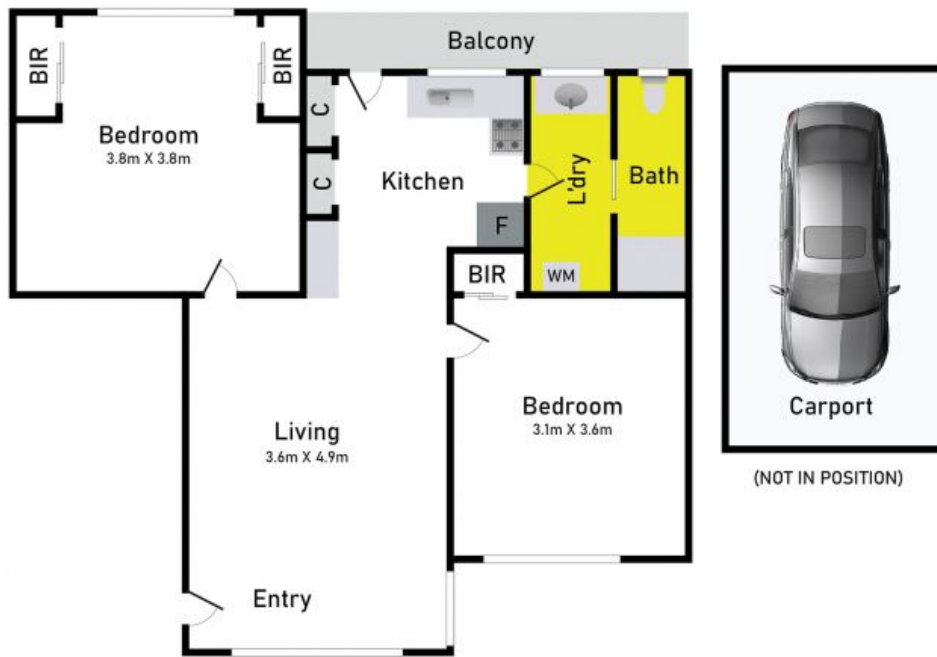
**HAYDEN**

**Glenn Hardman**

0419006480

glenn@haydengeelong.com.au

## Floor Plan



## 4/103 Gertrude St, Geelong West

\* Whilst Ray White Geelong has made every attempt to ensure the accuracy of the floor plan contained here, measurements are approximate and no responsibility is taken for any error, omission or misstatement. This plan is for illustrative purposes only.