



16 Stringers Lane LEOPOLD, VIC



### Terrific Family Living Overflowing With Features!

If you're looking for a family home that stands out from the pack, look no further! The flexible layout is perfect for home business owners, while the side gates provide vehicle access to the north-facing backyard!

Easy-care gardens are a blessing, with hedges lining the back fence for privacy. The remote double garage features internal access and epoxy flooring, while the side gates are perfect for caravan/boat storage. Security cameras provide peace of mind.

A blissful family lifestyle is yours to keep with sporting grounds, Leopold Primary School and the Gateway Plaza all a short stroll away. The Gateway Sanctuary inspires you to reconnect with nature, while the Leopold Community Hub is within easy reach. Just jump in the car, and you'll soon be in the heart of Geelong or exploring the picturesque Bellarine Pen

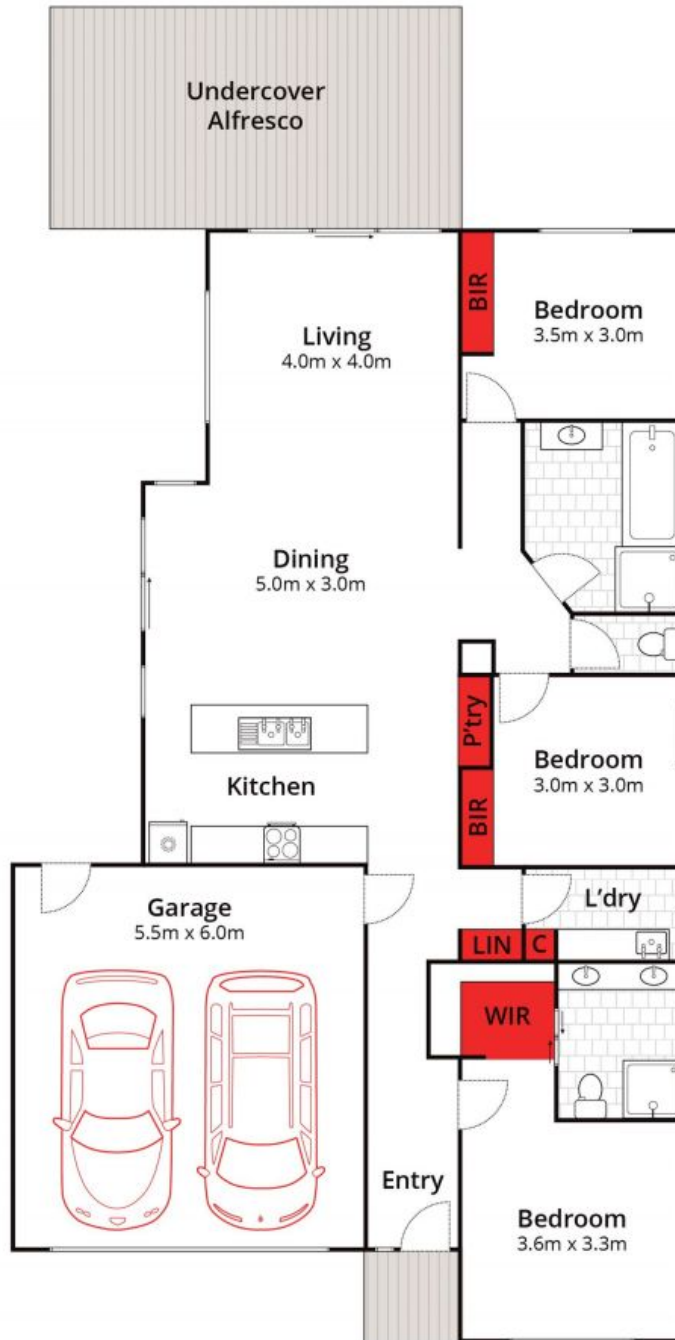
**Price:** \$680,000 - \$720,000  
**Property Type:** House  
**Land:** 487 m2



**Karen Purcell**

0448510143

karenp@haydenleopold.com.au



Approx. Land Area: 486m<sup>2</sup>

Whilst [bwrn.com.au](http://bwrn.com.au) has made every attempt to ensure the accuracy of the floor plan contained here, measurements are approximate and no responsibility is taken for any error, omission, or mis-statement. This plan is for illustrative purposes only.



**16 Stringers Lane, Leopold**

**HAYDEN**

**16 Stringers Lane**

**LEOPOLD, VIC**