



12 Prismatic Place LEOPOLD, VIC



3



2



2

### Low-Maintenance Bliss With Room For The Caravan!

Boasting off-street parking for boat/trailer/caravan storage, this low-maintenance home will instantly appeal to first homebuyers, families and downsizers alike!

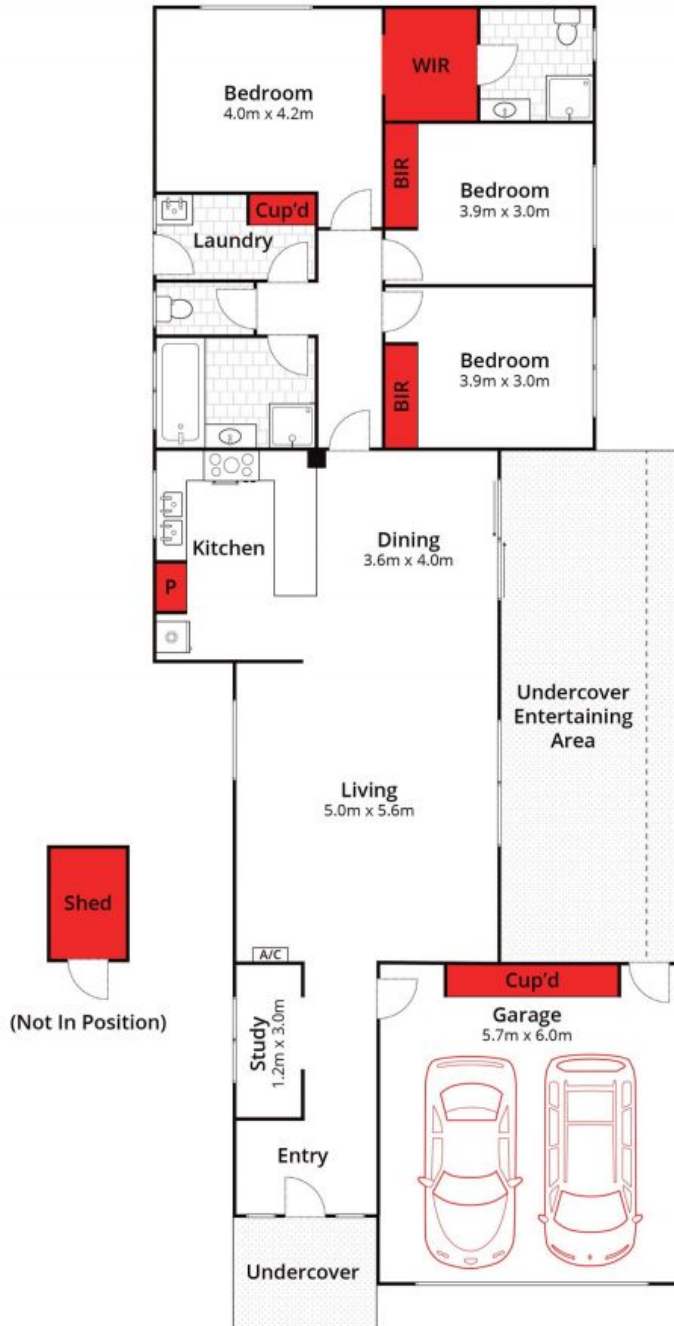
**Price:** \$599,000 - \$640,000  
**Property Type:** House  
**Land:** 402 m2

HAYDEN

**Karen Purcell**

0448510143

karenp@haydenleopold.com.au



Whilst [bwrn.com.au](http://bwrn.com.au) has made every attempt to ensure the accuracy of the floor plan contained here, measurements are approximate and no responsibility is taken for any error, omission, or mis-statement. This plan is for illustrative purposes only.



## 12 Prismatic Place, Leopold

**HAYDEN**