



1/7-9 Dendle Street LEOPOLD, VIC



2



1



1

### Light And Bright Spacious Unit!

This two-bedroom unit is a great opportunity for those looking for their first home, to invest or downsize while living in a prime location. The unit is approximately 800 metres away from the Gateway Plaza, a shopping centre that offers a wide range of shops, cafes, and restaurants. It is also close to the Gateway Sanctuary, a wetland reserve that provides a home for various bird species and other wildlife.

**Price:** \$430,000 - \$460,000

**Property Type:** Unit

**Land:** 243 m<sup>2</sup>

# HAYDEN

**Karen Purcell**

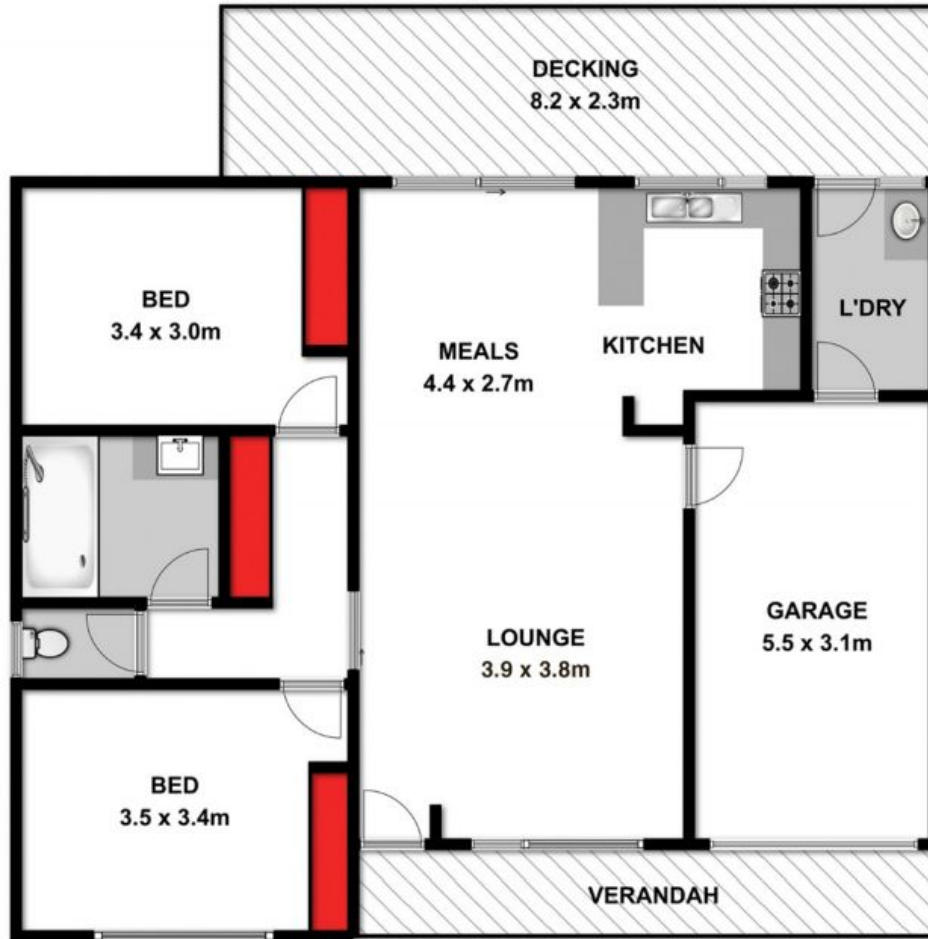
0448510143

karenp@haydenleopold.com.au

**David Pemberton**

0419874029

david@haydenleopold.com.au



Approx Area 46.8m<sup>2</sup>

Whilst [bwrn.com.au](http://bwrn.com.au) has made every attempt to ensure the accuracy of the floor plan contained here, measurements are approximate and no responsibility is taken for any error, omission, or mis-statement. This plan is for illustrative purposes only.



**1/7-9 Dendle Drive, Leopold**

**HAYDEN**

1/7-9 Dendle Street

LEOPOLD, VIC