



12 Moss Road LEOPOLD, VIC



3



2



2

A Terrific Investment Or Future First Home!

Have you been searching for the perfect investment property or your future first home? This low-maintenance residence just three years old, is the one you've been waiting for!

The interiors are in immaculate condition, evoking a light and airy ambience throughout the home. The open plan living/dining/kitchen zone creates a beautiful setting for relaxation or dinner parties, with a sliding door opening onto the north-facing alfresco area. The kitchen features a breakfast bar, walk-in pantry and stainless steel appliances (dishwasher and 900mm oven/gas cooktop).

The main bedroom boasts a walk-in robe and en suite. Two additional bedrooms with built-in robes share close access to the main bathroom, while the laundry completes the layout. Ducted heating, a split-system air conditioner and ceiling fans keep you in absolute comfort. Low-maintenance landscaping surrounds the entire home, while the remote double garage fe

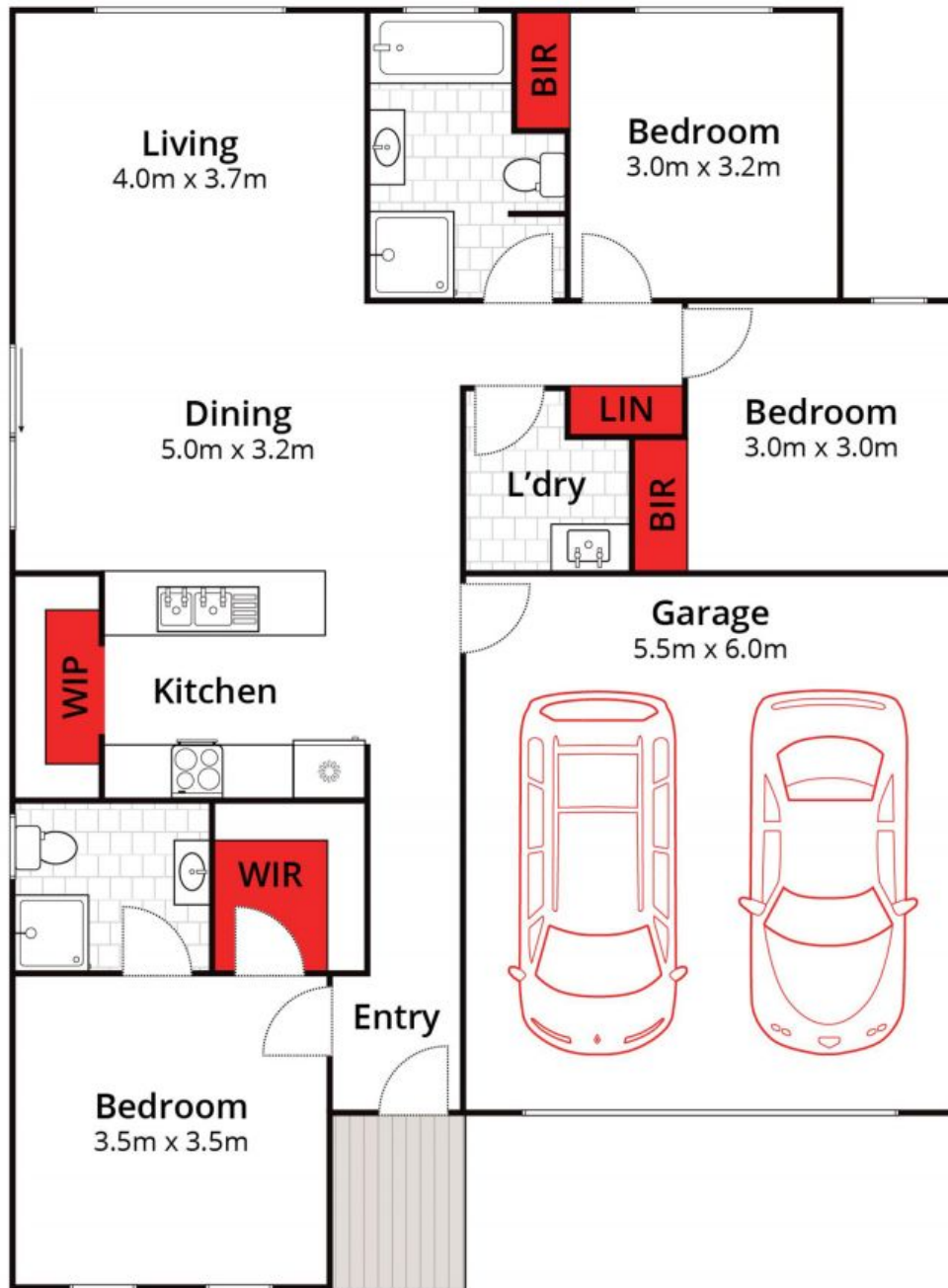
Price: \$585,000 - \$610,000
Property Type: House
Land: 308 m2

HAYDEN

Karen Purcell

0448510143

karenp@haydenleopold.com.au



Whilst bwrn.com.au has made every attempt to ensure the accuracy of the floor plan contained here, measurements are approximate and no responsibility is taken for any error, omission, or mis-statement. This plan is for illustrative purposes only.



12 Moss Road, Leopold

HAYDEN

12 Moss Road

LEOPOLD, VIC