



93 Elizabeth Street GEELONG WEST, VIC



3



1



2

Charming Family Appeal In Prized Location

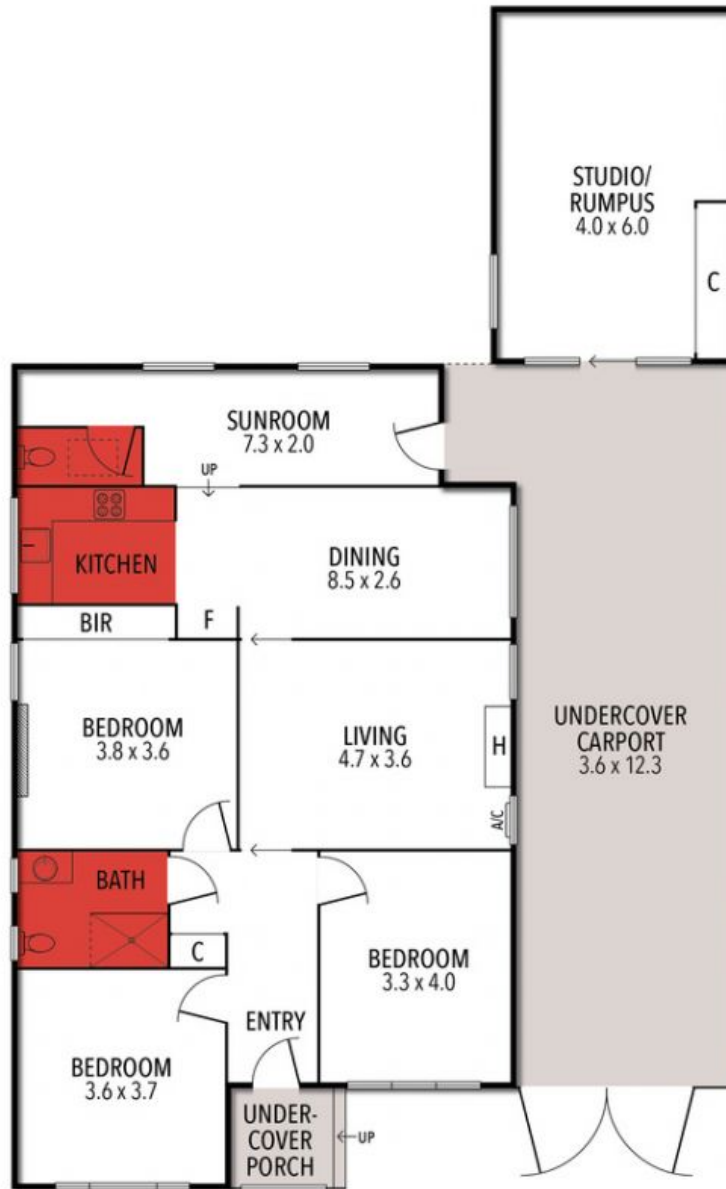
**Price:** \$675,000 to \$740,000  
**Property Type:** House  
**Land:** 420 m2

# HAYDEN

**Glenn Hardman**

0419006480

glenn@haydengeelong.com.au



THE ABOVE PLAN IS AN ARTIST'S IMPRESSION ONLY, IT INCLUDES ELEMENTS THAT ARE FOR DISPLAY PURPOSES ONLY AND MAY NOT BE TO SCALE. LANDSCAPING SHOWN IS INDICATIVE ONLY. DIMENSIONS ARE APPROXIMATE.