



93 Elizabeth Street GEELONG WEST, VIC



3



1



2

Charming Family Appeal In Prized Location

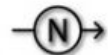
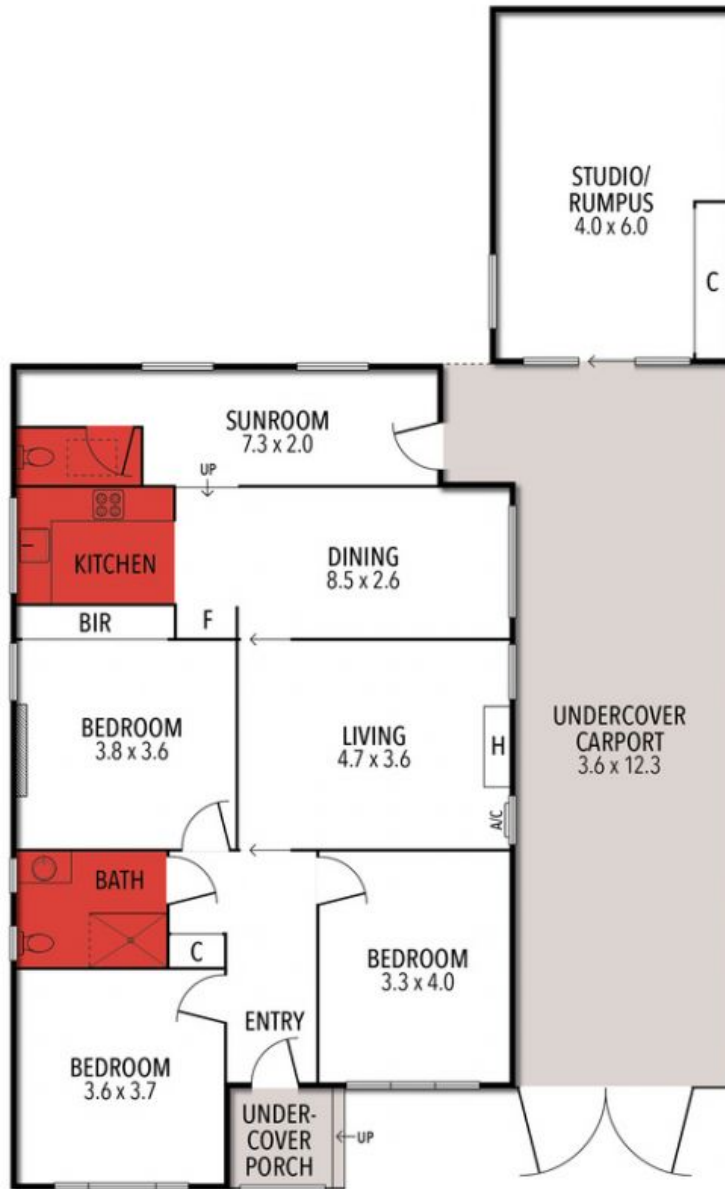
Price: \$675,000 to \$740,000
Property Type: House
Land: 420 m2

HAYDEN

Glenn Hardman

0419006480

glenn@haydengeelong.com.au



THE ABOVE PLAN IS AN ARTIST'S IMPRESSION ONLY, IT INCLUDES ELEMENTS THAT ARE FOR DISPLAY PURPOSES ONLY AND MAY NOT BE TO SCALE. LANDSCAPING SHOWN IS INDICATIVE ONLY. DIMENSIONS ARE APPROXIMATE.