



13 Pinder Court ST ALBANS PARK, VIC



3



1



1

## The Perfect Place To Nest Or Invest!

If you've been searching for the perfect first home or investment property, this is the one for you!

Outside, the covered entertaining area creates a wealth of space for fun-filled gatherings in every season. So why not invite everyone over for a housewarming? A mature tree makes a stunning statement in the backyard, where you can relax under the leafy shade as you watch the kids play. Off-street parking includes a remote carport and a single garage with adjoining storage room.

Located in a peaceful court on approx. 629m2, this home places you a short stroll to public transport, St Albans Reserve and Buckley's Entertainment Centre. The Breakwater Industrial Zone is also within walking distance, where you'll find cafes, fitness studios and play centres. Geelong East Primary School and Newcomb Secondary College are within easy reach,

**Price:** \$520,000 - \$570,000

**Property Type:** House

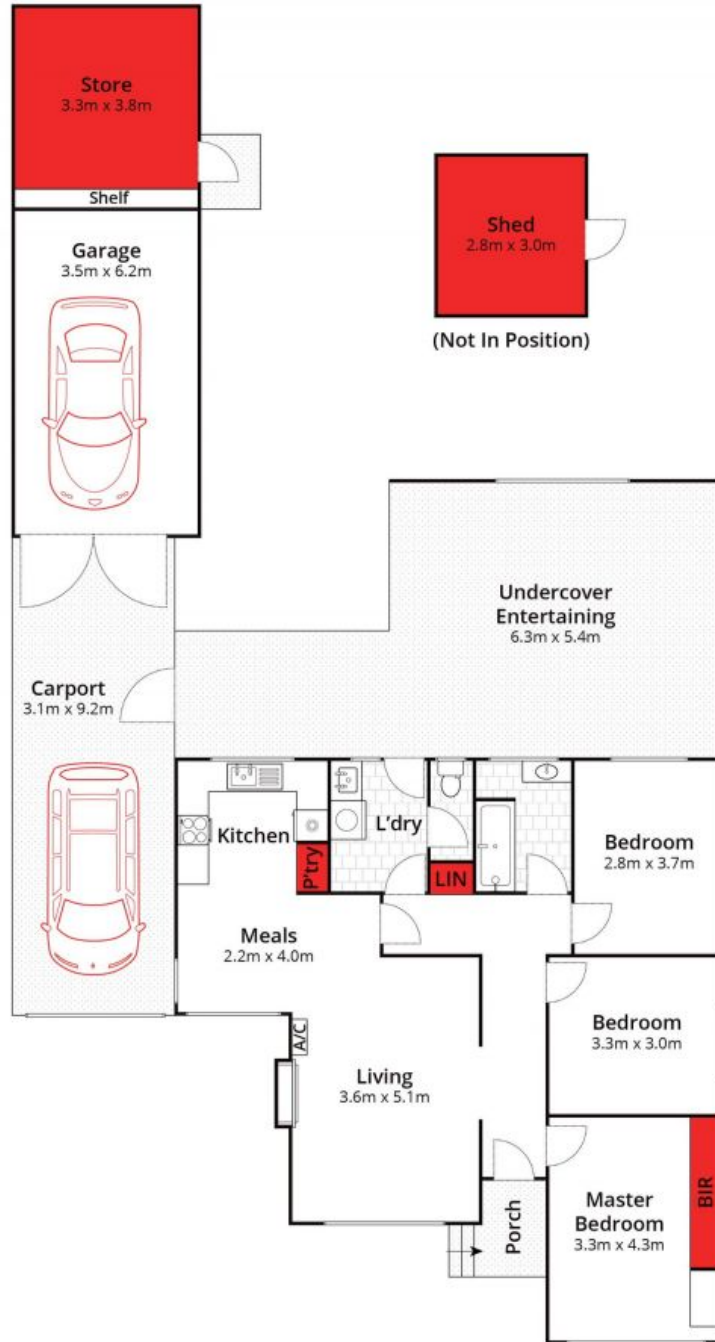
**Land:** 629 m2

# HAYDEN

**Karen Purcell**

0448510143

karenp@haydenleopold.com.au



Approx. House Area 92m<sup>2</sup>

Whilst [bwrn.com.au](http://bwrn.com.au) has made every attempt to ensure the accuracy of the floor plan contained here, measurements are approximate and no responsibility is taken for any error, omission, or mis-statement. This plan is for illustrative purposes only.



**13 Pinder Court, Saint Albans Park**

**HAYDEN**

**13 Pinder Court**

**ST ALBANS PARK, VIC**