

376 Pakington Street NEWTOWN, VIC



2



1

Position Perfect

This property presents a wonderful opportunity for the astute renovator, investor or developer. The large parcel of land is approximately 598m², has 3 street frontages, is zoned MUZ, mixed use and would lend itself to many opportunities (STCA). With a tenant currently in place, on a periodical arrangement, a savvy purchaser can plan their options with this fabulous river end Pakington Street property.

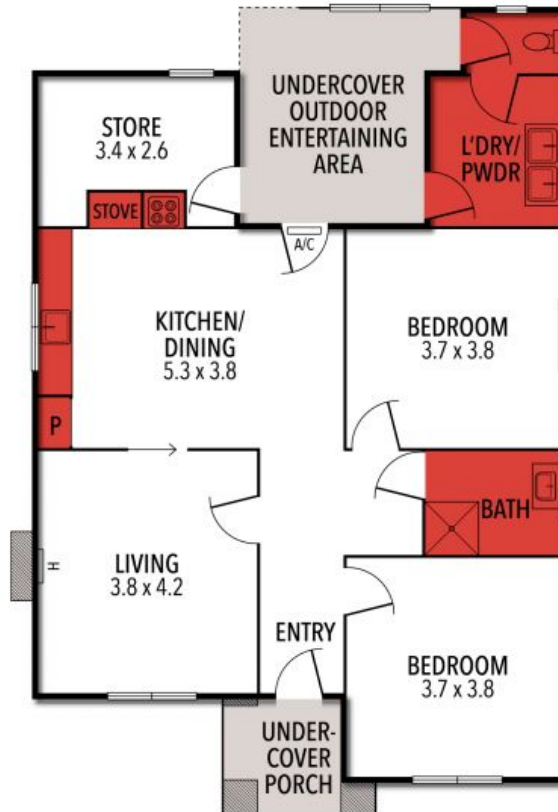
Price: POA
Property Type: House
Land: 598 m²

HAYDEN

Laurie McGovan

0412167677

laurie@haydengeelong.com.au



THE ABOVE PLAN IS AN ARTIST'S IMPRESSION ONLY, IT INCLUDES ELEMENTS THAT ARE FOR DISPLAY PURPOSES ONLY AND MAY NOT BE TO SCALE. LANDSCAPING SHOWN IS INDICATIVE ONLY. DIMENSIONS ARE APPROXIMATE.