



4 Tamar Court LEOPOLD, VIC



4



2



2

Private location, premium opportunity

Nestled in a quiet court in central Leopold on a generous 849 sqm (approx.) allotment, this family residence presents spacious living inside and out. With an intriguing geometric design, this four-bedroom home is not your run-of-the-mill 70s build and represents a great opportunity for a family to make a mark with their own personal touches (STCA).

The unique floor plan comprises four generous bedrooms, two with built-in robes, serviced by a family bathroom with separate toilet, and a master bedroom with tiled ensuite and wall-to-wall mirrored robes. An enormous rumpus room offers endless possibilities - perhaps a kids play zone or home studio or workshop. The main family lounge area has plush carpet, reverse-cycle air conditioning and a wood-fired heater. A formal dining area connects the living room with the kitchen, where ample cabinetry and breakfast bar create a functional space. Appliances include a gas-powered Westinghouse benchtop oven/stove top and dishwasher. A cosy meals area leads out through glass-sliding doors to the east-facing al fresco di

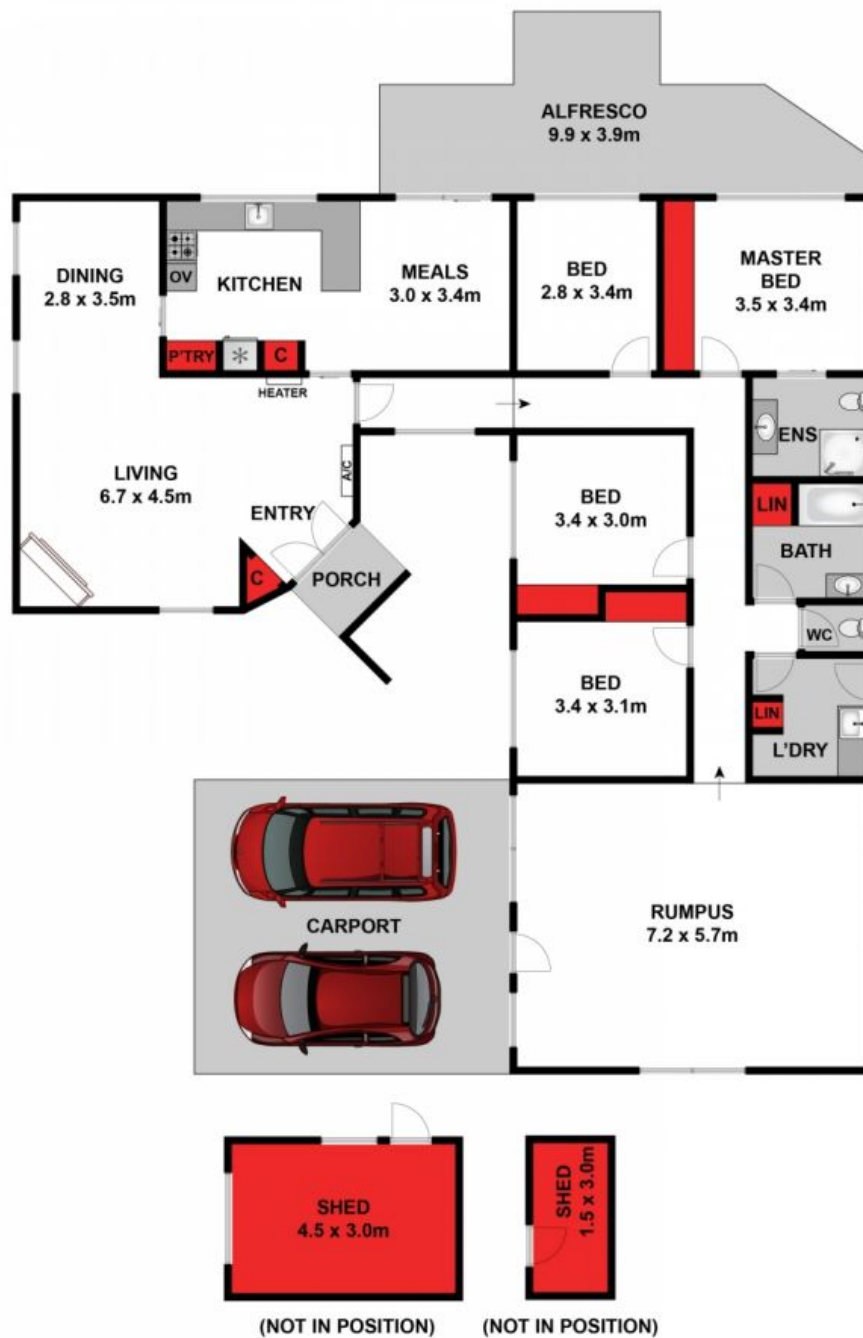
Price: \$620,000-\$660,000
Property Type: House
Land: 849 m2

HAYDEN

Karen Purcell

0448510143

karenp@haydenleopold.com.au



Approx House Area 197m²

Whilst bwrn.com.au has made every attempt to ensure the accuracy of the floor plan contained here, measurements are approximate and no responsibility is taken for any error, omission, or mis-statement. This plan is for illustrative purposes only.

4 Tamar Court, Leopold

HAYDEN

4 Tamar Court

LEOPOLD, VIC