



15 Gallois Gardens LEOPOLD, VIC



## Dual Access Property - Private Inspections Available

If you've been on the hunt for an opportunity to build your dream home with views set in a quiet streetscape, this address is for you. Positioned in the tightly held enclave of family friendly streets surrounding the Leopold Primary School, this 780m2 (approx) block allows for plenty of options for development utilising the dual laneway access.

**Price:** \$590,000 - \$630,000

**Property Type:** House

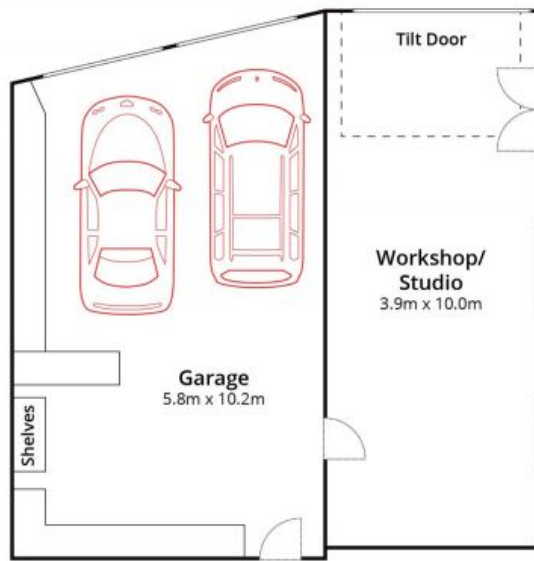
**Land:** 788 m2

# HAYDEN

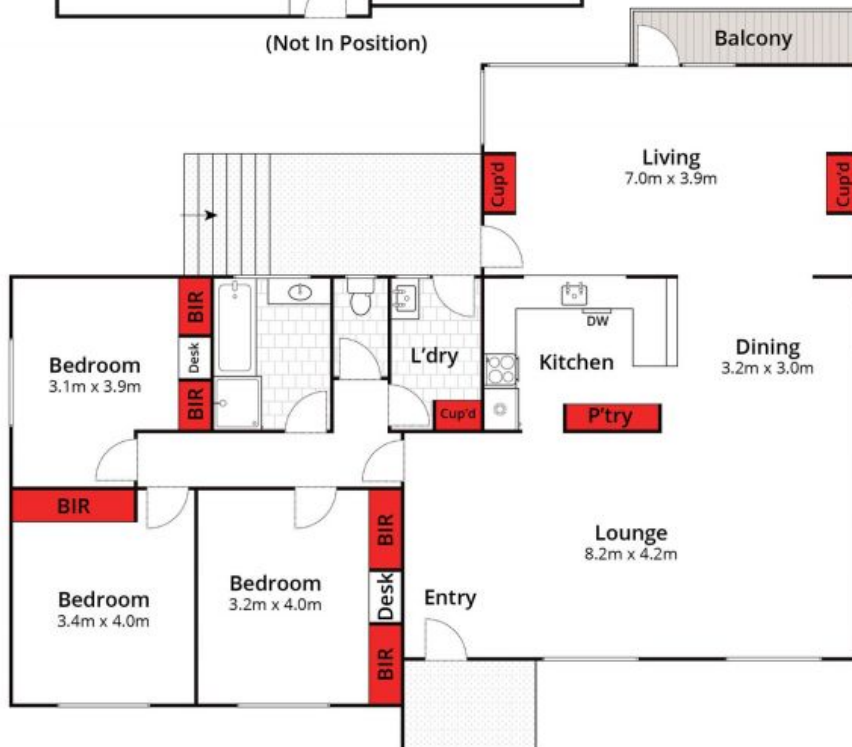
**Karen Purcell**

0448510143

karenp@haydenleopold.com.au



(Not In Position)



Approx Land Area 788m<sup>2</sup>

Whilst [bwrn.com.au](http://bwrn.com.au) has made every attempt to ensure the accuracy of the floor plan contained here, measurements are approximate and no responsibility is taken for any error, omission, or mis-statement. This plan is for illustrative purposes only.

**15 Gallois Gardens, Leopold**

**HAYDEN**

**15 Gallois Gardens**

**LEOPOLD, VIC**