



23 Beresford Close OCEAN GROVE, VIC



3



2



1

## Entry Level Home Close to Conveniences

Completing this enticing package is a single garage with internal access and a remote door, ensuring convenience and security. The picket fence adds a touch of charm and character to this entry-level Ocean Grove property. Don't miss out on the opportunity to call this delightful cottage your own. Contact us today to arrange a viewing and start enjoying the coastal lifestyle you've always dreamed of.

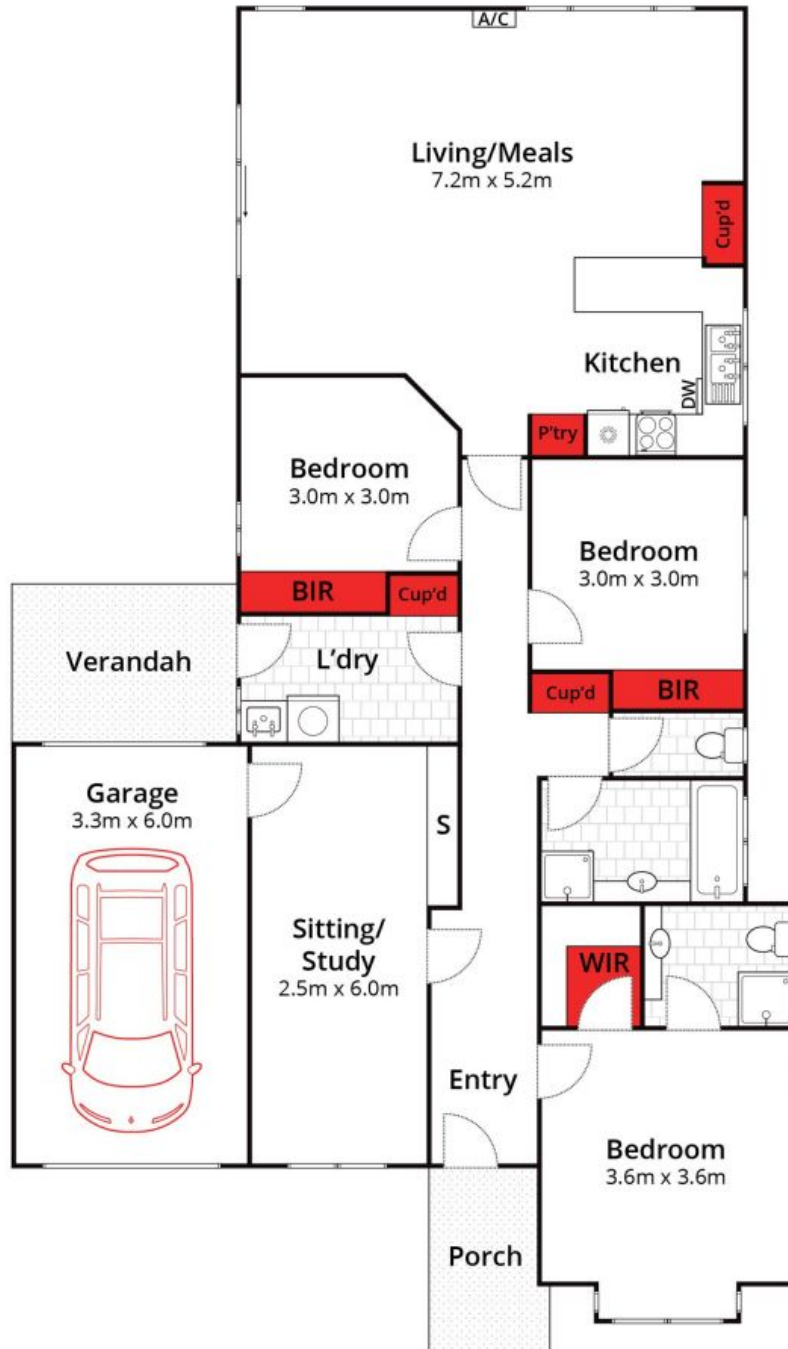
**Price:** \$750,000  
**Property Type:** House  
**Land:** 402 m2

# HAYDEN

**Lynley Bassett**

0448515925

lynley@haydenoceanogrove.com.au



Whilst [bwrn.com.au](http://bwrn.com.au) has made every attempt to ensure the accuracy of the floor plan contained here, measurements are approximate and no responsibility is taken for any error, omission, or mis-statement. This plan is for illustrative purposes only.

**23 Beresford Close, Ocean Grove**

**HAYDEN**

**23 Beresford Close**

**OCEAN GROVE, VIC**