



23 Beresford Close OCEAN GROVE, VIC



3



2



1

Entry Level Home Close to Conveniences

Completing this enticing package is a single garage with internal access and a remote door, ensuring convenience and security. The picket fence adds a touch of charm and character to this entry-level Ocean Grove property. Don't miss out on the opportunity to call this delightful cottage your own. Contact us today to arrange a viewing and start enjoying the coastal lifestyle you've always dreamed of.

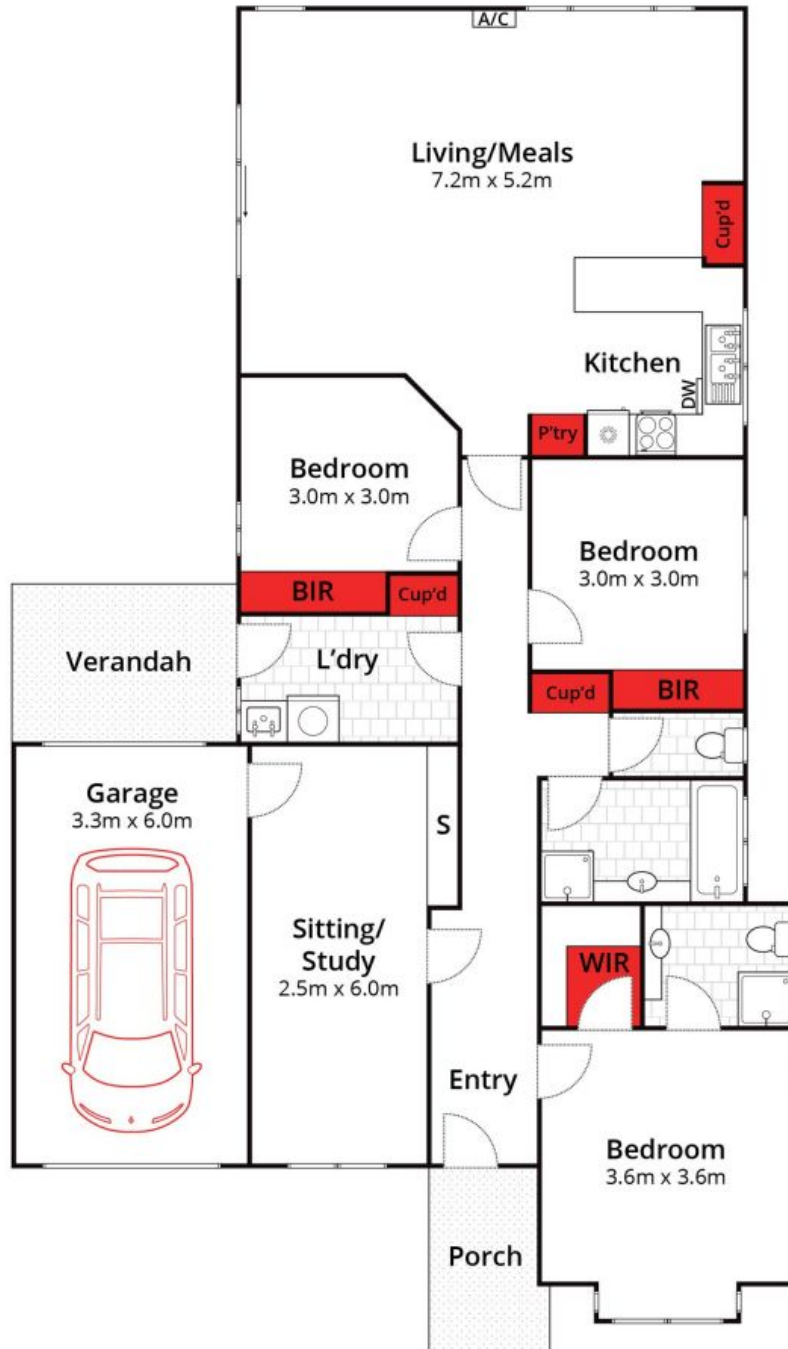
Price: \$750,000
Property Type: House
Land: 402 m2

HAYDEN

Lynley Bassett

0448515925

lynley@haydenoceanogrove.com.au



Whilst bwrn.com.au has made every attempt to ensure the accuracy of the floor plan contained here, measurements are approximate and no responsibility is taken for any error, omission, or mis-statement. This plan is for illustrative purposes only.

23 Beresford Close, Ocean Grove

HAYDEN

23 Beresford Close

OCEAN GROVE, VIC