



19 Coppice Street LARA, VIC



5



2



2

## Luxury Family Living In Coridale Estate

Perfectly positioned in a great location in Lara, this near brand new family home is sure to satisfy all aspects of functionality, appeal and size.

Situated within a unique and exciting location, Coridale Estate will provide everything you need to be healthy, happy and to live a good life. Only 5 minutes- drive from Lara Town Centre, only 20 minutes to the hustle and bustle of Geelong and an amazing 50 minutes to the metropolis of Melbourne, why not call Coridale a home.

### Key Features:

- Heating and cooling throughout
- Brand New Home
- Close to all amenities

**Price:** \$780,000 to \$820,000

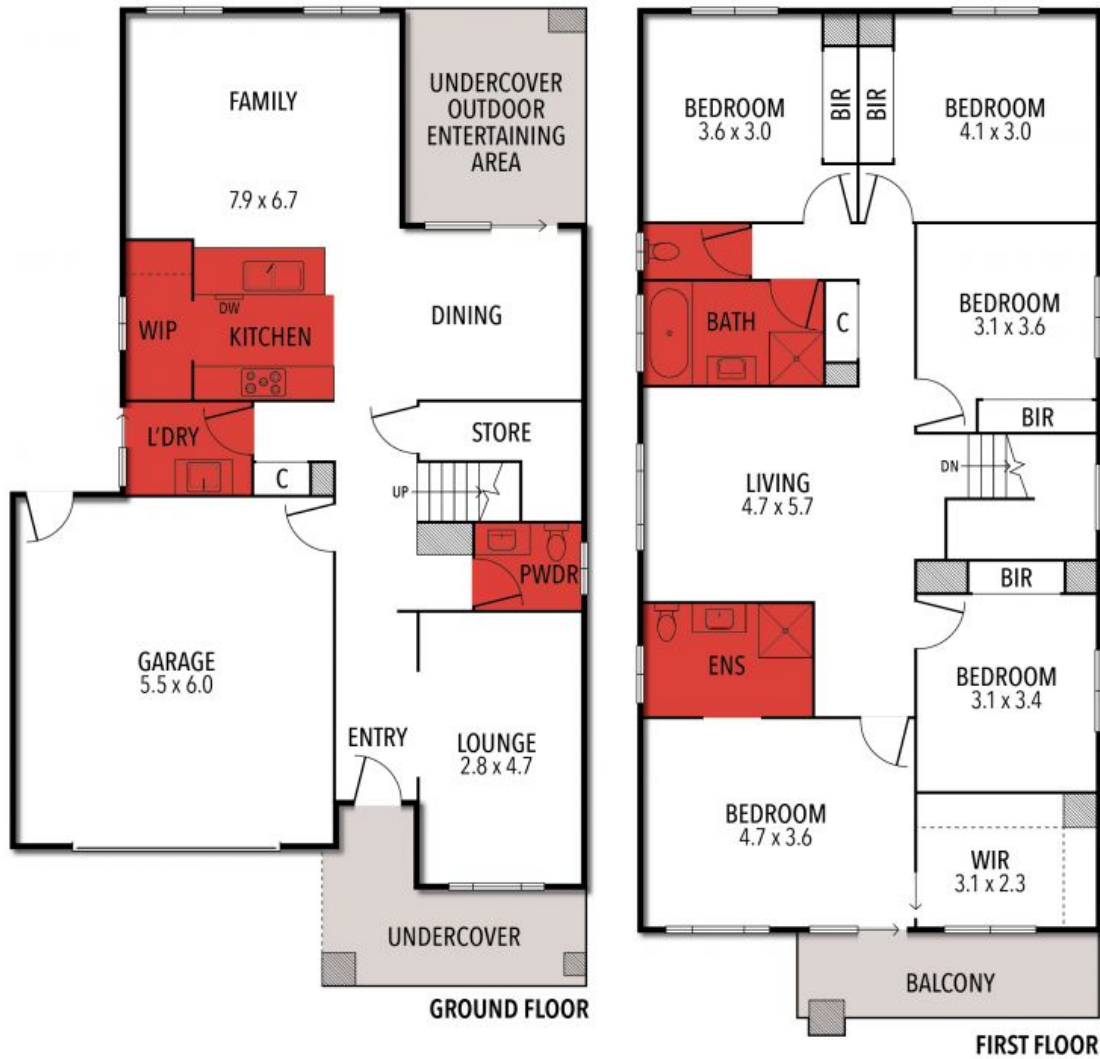
**Property Type:** House

# HAYDEN

**Glenn Hardman**

0419006480

glenn@haydengeelong.com.au



THE ABOVE PLAN IS AN ARTIST'S IMPRESSION ONLY, IT INCLUDES ELEMENTS THAT ARE FOR DISPLAY PURPOSES ONLY AND MAY NOT BE TO SCALE. LANDSCAPING SHOWN IS INDICATIVE ONLY. DIMENSIONS ARE APPROXIMATE.