



11 Mandlay Close LEOPOLD, VIC



4



2



2

Expansive Living on Leopold Hill

With a street view overlooking the majestic You Yangs, this large family home in a quiet Cul-de-Sac offers peaceful family living across two levels and landscaped gardens within a large 1135m2 block.

High ceilings and a family friendly floorplan give this light filled home plenty of space for every member of the family. Alongside the open plan space with kitchen and living zones, there's a theatre room at the front of the home, an ideal escape to indulge in movies with the pull down screen, surround sound and projector system. Home cooks will love the large social kitchen that flows to the family living and dining zone; the gas cook top, wall oven and sizeable walk-in pantry all set within ample cabinetry. Views here overlook the garden, solar heated pool and outdoor dining which can all be accessed by glass double doors. Dividing the main living space and family bedrooms, there's a pool room complete with pool table and accessories including custom table lighting. Three generous bedrooms are positioned together in a downstairs wing, all have built in robes and share a bright family bathroom and a sunny study space. A secluded master retreat is located upstairs and for

Price: \$890,000 - \$950,000

Property Type: House

Land: 1135 m2

HAYDEN

Karen Purcell

0448510143

karenp@haydenleopold.com.au

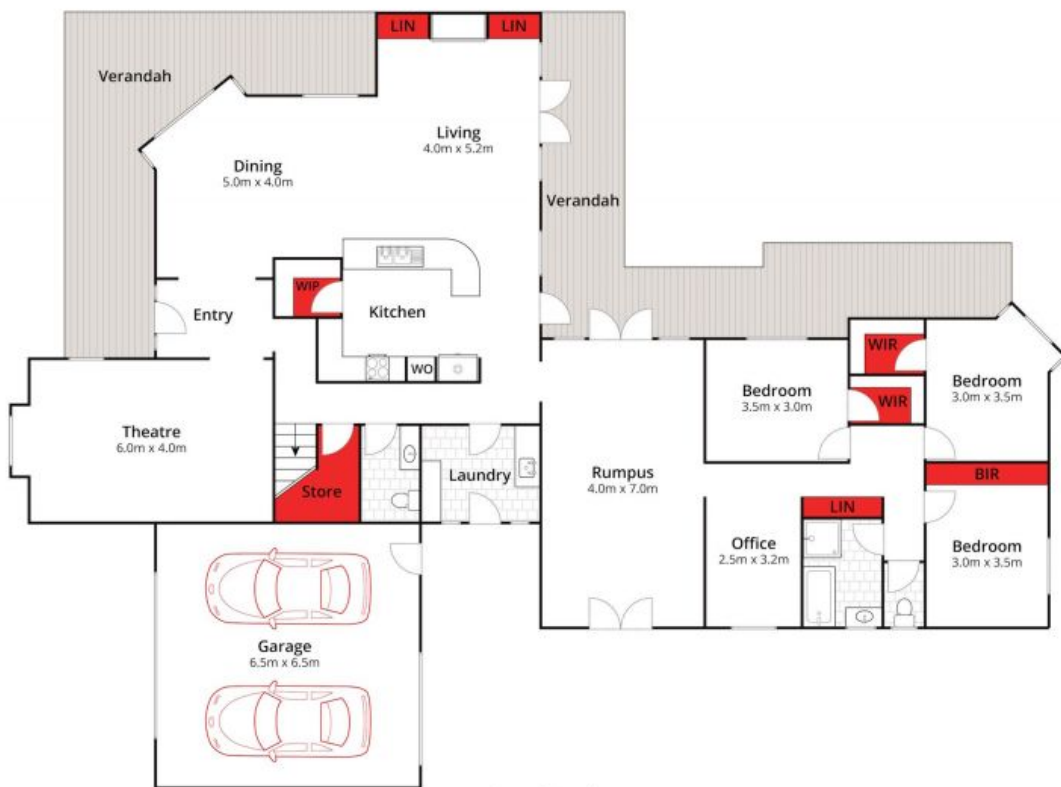
David Pemberton

0419874029

david@haydenleopold.com.au



First Level



Ground Level

Whilst bwrn.com.au has made every attempt to ensure the accuracy of the floor plan contained here, measurements are approximate and no responsibility is taken for any error, omission, or mis-statement. This plan is for illustrative purposes only.

11 Mandlay Close, Leopold

HAYDEN