



2/12 Boyne Avenue EAST GEELONG, VIC



Great Starter in Super Location

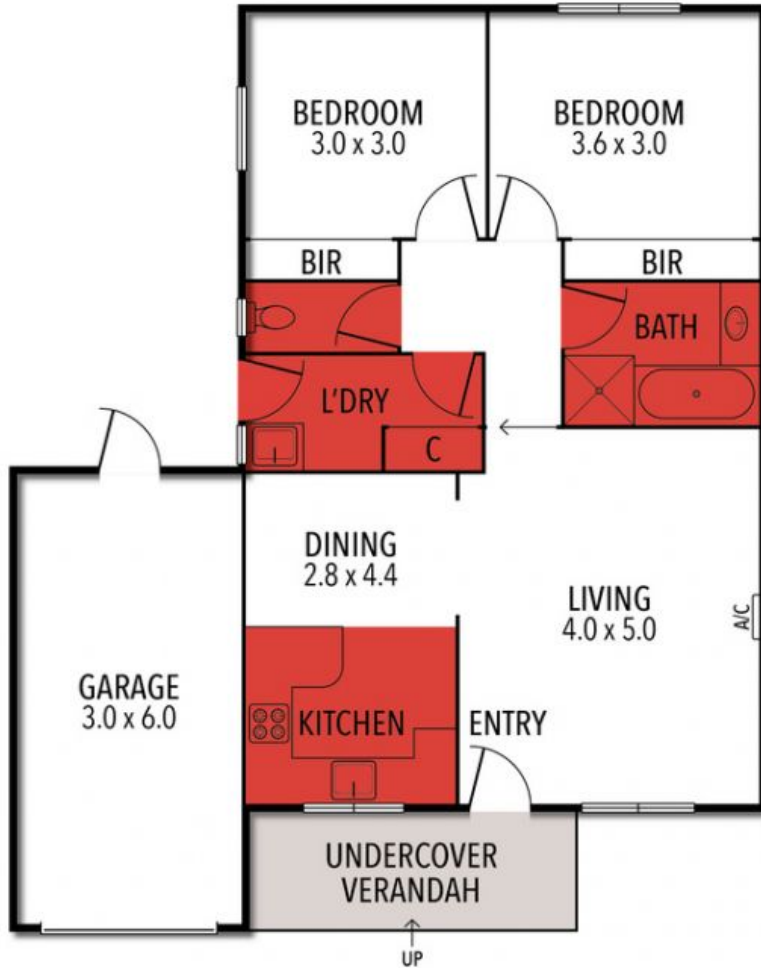
Price: \$399,000 - \$438,000  
Property Type: Unit

HAYDEN

Laurie McGovan

0412167677

laurie@haydengeelong.com.au



THE ABOVE PLAN IS AN ARTIST'S IMPRESSION ONLY, IT INCLUDES ELEMENTS THAT ARE FOR DISPLAY PURPOSES ONLY AND MAY NOT BE TO SCALE. LANDSCAPING SHOWN IS INDICATIVE ONLY. DIMENSIONS ARE APPROXIMATE.