



1/57 Ash Road LEOPOLD, VIC



2



1



1

Complete Convenience in Leopold

With morning coffee just a short walk away along the popular Ash Road shopping strip, this wonderfully located unit offers airy spaces with an oversized feel. Enjoying an open plan layout, this property presents an easy, low maintenance option for buyers keen to be in the heart of Leopold.

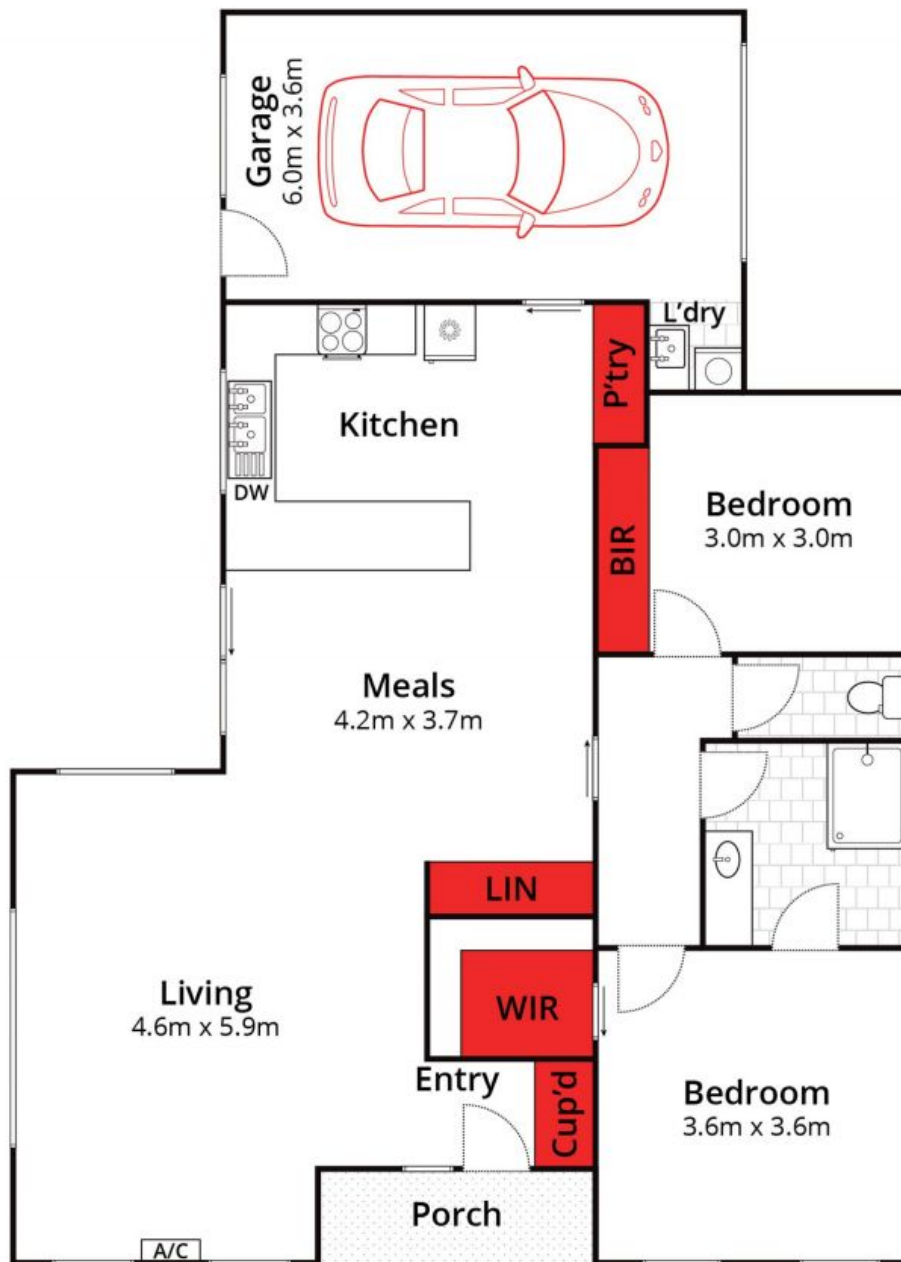
Price: \$450,000 - \$490,000
Property Type: Unit
Land: 242 m2

HAYDEN

Karen Purcell

0448510143

karenp@haydenleopold.com.au



Whilst bwrn.com.au has made every attempt to ensure the accuracy of the floor plan contained here, measurements are approximate and no responsibility is taken for any error, omission, or mis-statement. This plan is for illustrative purposes only.



1/57 Ash Road, Leopold

HAYDEN

1/57 Ash Road

LEOPOLD, VIC