



10 Beekeeper Road ARMSTRONG CREEK, VIC



Perfect Family Retreat

**Price:** \$579,000 - \$619,000  
**Property Type:** House  
**Land:** 343 m2

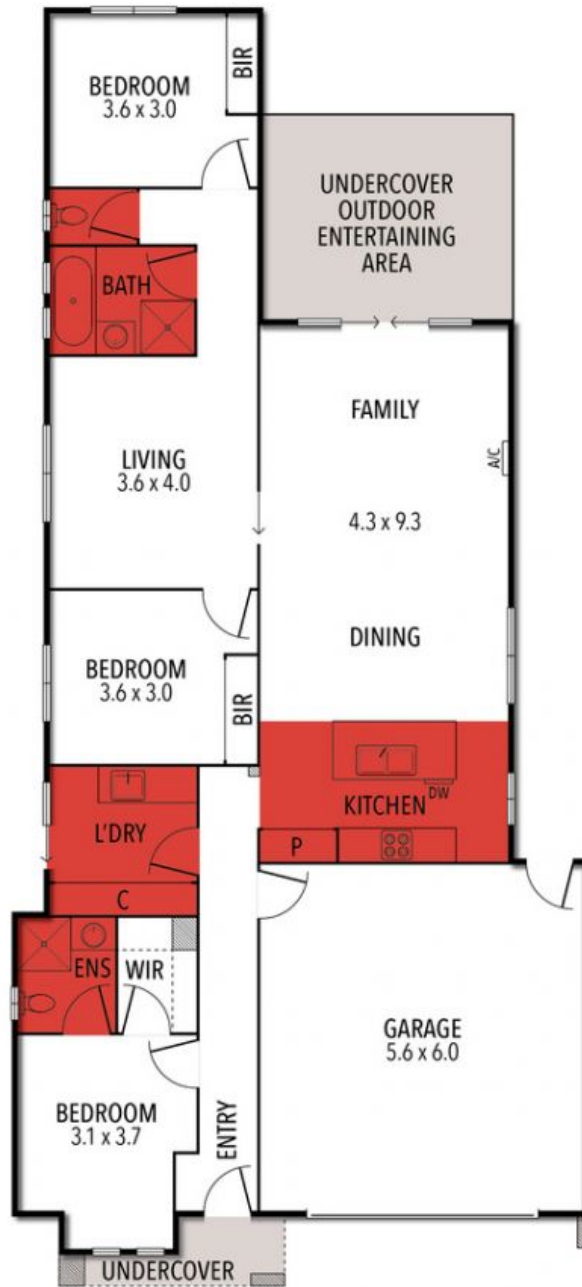
HAYDEN

Laurie McGovan

0412167677

laurie@haydengeelong.com.au

# 10 BEEKEEPER ROAD, ARMSTRONG CREEK



THE ABOVE PLAN IS AN ARTIST'S IMPRESSION ONLY, IT INCLUDES ELEMENTS THAT ARE FOR DISPLAY PURPOSES ONLY AND MAY NOT BE TO SCALE. LANDSCAPING SHOWN IS INDICATIVE ONLY. DIMENSIONS ARE APPROXIMATE.