



16 Hannan Crescent LEOPOLD, VIC



3



1



1

Fabulous first home for families

If a blank slate in a fantastic location is your idea of a dream first home for your family, look no further than this three-bedroom, one-bathroom brick home situated in a convenient Leopold locale, close to the local primary school, shopping centres and reserves. On a large (678 sqm approx.) triangular block on a gentle bend in a quiet street, this functional home is ready for you to move in while you decide when and how you might improve upon the great foundation already here.

Price: \$530,000 - \$550,000

Property Type: House

Land: 679 m2

HAYDEN

Karen Purcell

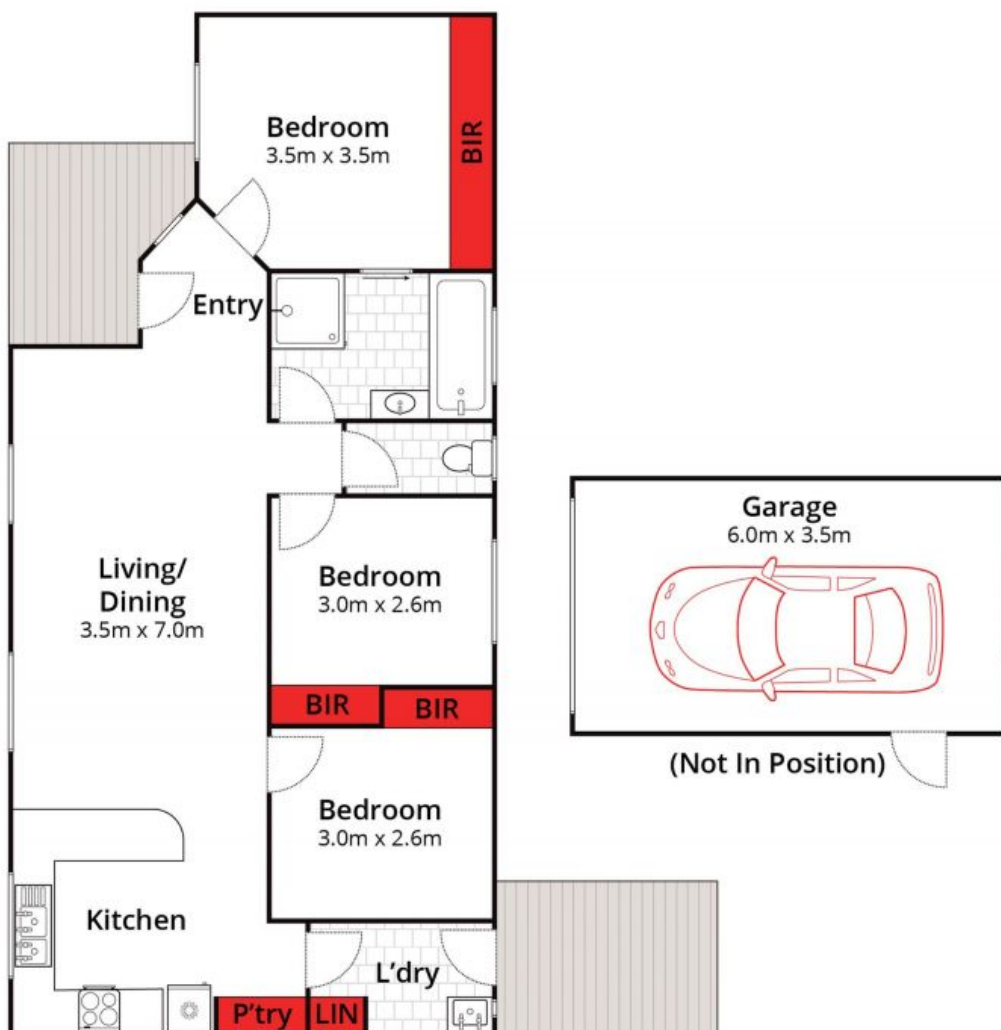
0448510143

karenp@haydenleopold.com.au

David Pemberton

0419874029

david@haydenleopold.com.au



Whilst bwrn.com.au has made every attempt to ensure the accuracy of the floor plan contained here, measurements are approximate and no responsibility is taken for any error, omission, or mis-statement. This plan is for illustrative purposes only.



16 Hannan Drive, Leopold

HAYDEN

16 Hannan Crescent

LEOPOLD, VIC